



PRESENTATION:

The digital timer is a plug-on controller specially design for Solenoid valves. The unit offers an easy time cycle programming. The switching time can be set with the "ON" touch between 0 and 99 seconds. The "OFF" touch allows to adjust the delay time between two switching cycles from 0 to 99 minutes. The unit is ready to control the valve as soon as the power is switched on. The ON/OFF sequence will be repeated so long as the unit is powered. Two LEDS indicate the output status. A "TEST" button is provided to check the cycle settings and to restart the control sequence from the output status "ON". Compared to analog solution it offers higher precision 'high. Through the display you can see the set times.

USE:

Condensate drain systems control
Timed systems.

TECHNICAL DETAILED:

Supply voltage: 24 to 240V AC/DC±10% 50/60Hz
 Output voltage: same as supply voltage
 Load current: 1A max
 Standby current: 4 mA max
 Operating temp. range: - 40°C to + 60°C
 Connector: EN 175301-803 / ISO 4400
 Environmental protection: IP65 (assembled with delivered gaskets)
 Housing dimensions: 86 x 44 x 20,5mm
 Off time: from 0 to 9,5 min., step 0,5 min.
 from 10 min. to 99 min., step 1 min.
 On time: from 0s to 9,5s., step 0,5s.
 from 10s to 99s., step 1s.
 Repeat accuracy: ± 0,01%
 Indicators: Green LED - Off phase
 Red LED - On phase

MATERIALS:

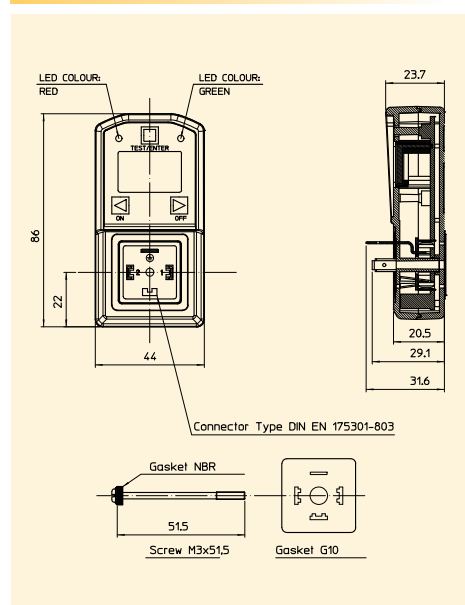
Housing: ABS V0
 Gasket:NBR(nitrile)

ACCESSORIES:

Connectors for S.V. (to be order separately)
 Pg 9 (6÷8mm) or Pg 11(8÷10mm)

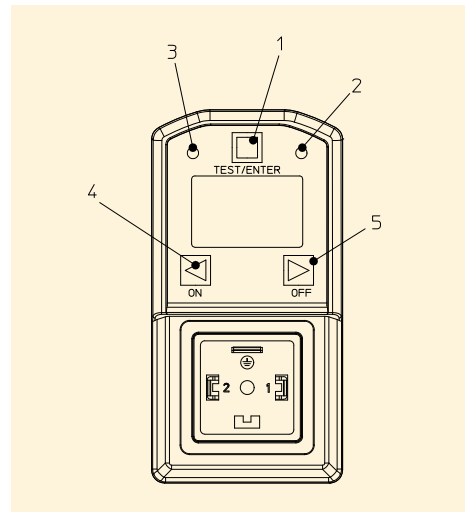


DIMENSIONS:



DESCRIPTION:

- | | |
|-----------------------------|-----------------------------|
| 1. Push-button TEST | |
| 2. Green Led not supplied : | output power absent (OFF) |
| 3. Red Led load supplied : | output power present (ON) |
| 4. Touch "ON": | regulation time "ON" |
| 5. Touch "OFF": | pause time regulation "OFF" |



The "ODE " reserves the right to carry out technical and aesthetic modifications without prior notification.