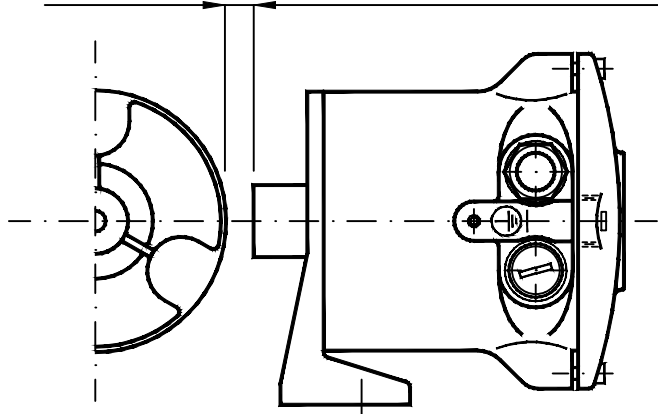


RPM CONTROLLER WITHOUT MECHANICAL COUPLING MOTION DETECTION IS ACTUATED BY AN INDUCTIVE SENSOR

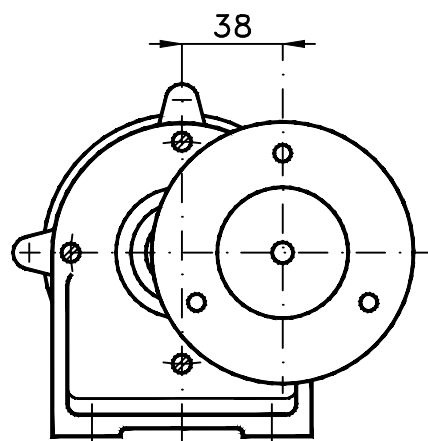
Max intervention distance 10 mm.



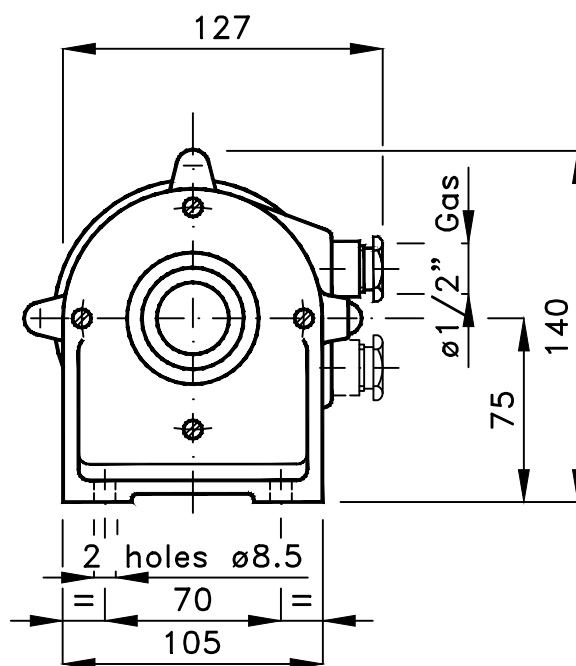
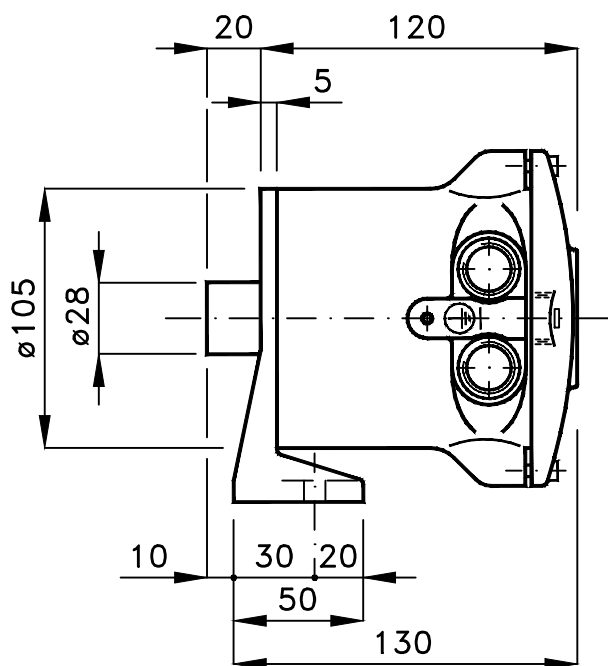
Radial reading

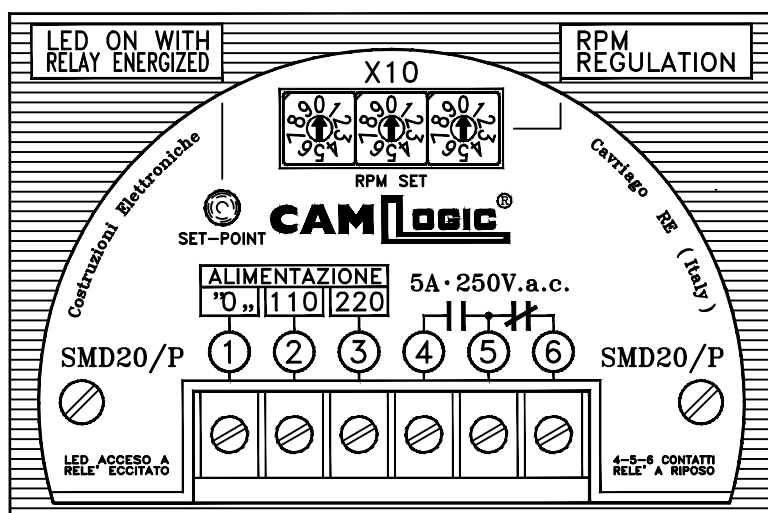
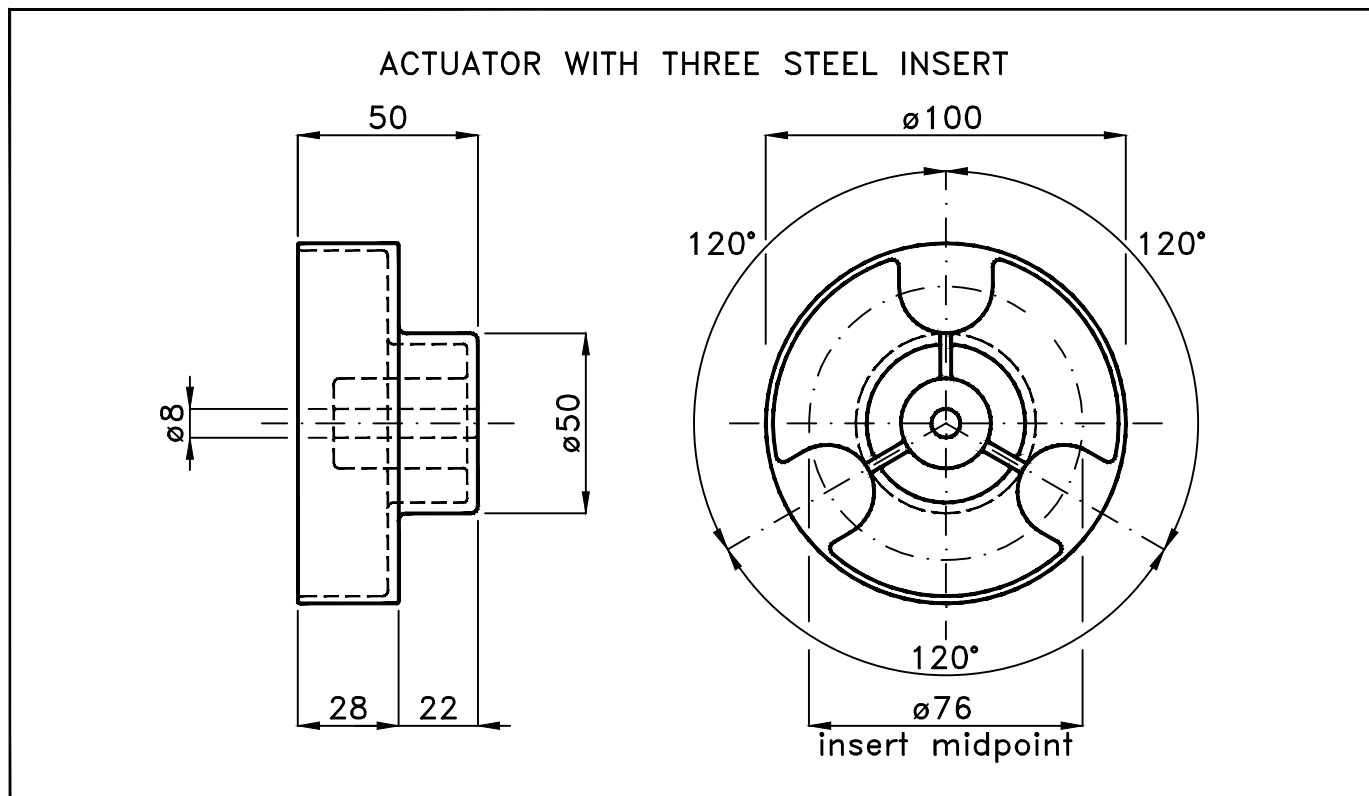
The CAMLOGIC digital inductive RPM controller can be fitted in any position. After connection to the terminal board, no further maintenance is necessary.

The RPM controller is supplied with actuator ø100 with three steel insert



Axial reading





WIRING

- 1-2-3 = Power supply : 24-48
110-220 V. 50/60Hz.
24 V.d.c.
- 4-5 = Utility contact,
normally open.
- 5-6 = Utility contact,
normally closed.

SPECIAL FEATURES

Die-cast aluminium casing.
Weight 1.600 Kg.
Operating field 30-6000 pulses/minute
Temperature from -20 +70 °C.
IP65 protection.


Motion detection actuated by an
inductive sensor.

Without mechanical coupling.

On request power supply at 24 V.d.c.

Because of its proven safety and reliability the SMD20/P digital RPM controller is the ideal solution for every industrial needs.



Certificate number TÜV 11 ATEX 386761 X
Marking:  II 2D Ex tD A21 IP65 T85°C