

GOYEN CONTROLS

RCA20HH

RCA20 3/4" SINGLE DIAPHRAGM DUST COLLECTOR VALVE MODELS 2001 & 2002

ES UNICO MODELO, HAY UNA
SIMILAR EN LA ASRO.

DESCRIPTION

Model 2002 is equipped with a 1/4" Pilot Connection, which is no longer offered. Model 2001 replaces Model 2002 and is equipped with a 1/4" Pilot Connection. Both models contain standard diaphragm of Buna sheet stock with Nylon disc. Valve is right angle, external pilot operated, single diaphragm design, for rapid cycling Dust Collector service. The only moving parts are the diaphragm and diaphragm spring. Valve is provided with bleed passage located in the clamped portion of the diaphragm, which extends diaphragm life. This quick acting design gives high flow to ensure high peak pressure in the blow tube.

CONSTRUCTION

Body and covers are pressure diecast aluminum. Standard diaphragm is made from a Buna N Elastomer, reinforced with Nylon Mesh and Nylon Disc. Optional diaphragms are available with Buna disc and In Viton® with Viton® disc.

SPECIFICATION

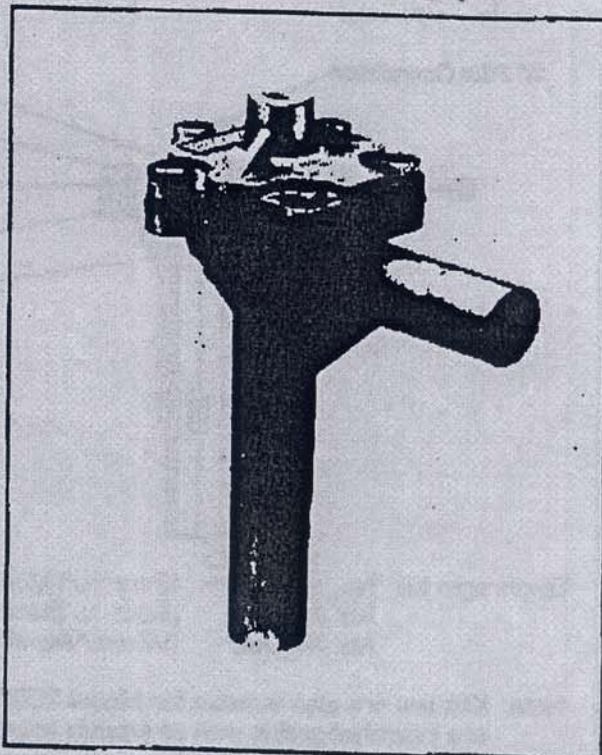
Inlet and Outlet Ports	: 1 1/16" Dia. Straight Pipe
Pilot Connection Port	: 1/8" Tapered pipe threads
Orifice Diameter	: 3/4"
Cv Flow Factor	: 11.2
Media	: Air or Nitrogen
Operating Pressure	: 110 PSI Maximum*
Temperature Range	: -40°F to +200° F (Buna N) : -25°F to +450° F (Viton®)

*Maximum Safe Body Working Pressure is 125 PSI

OPERATION

For optimum performance, valve should be connected to the RCA3D2-T pilot solenoid valve, using 1/4" OD tubing with minimum ID of 0.180". If tubing of larger ID is used or length of tubing exceeds 3 feet maximum recommended length, the ratio of mechanical on time to electrical on time will be increased. Recommended electrical on time range is 50 to 100 Milliseconds.

The valve is equipped with internal bleed passage and utilizes system pressure for operation. When the solenoid pilot valve is energized, this exhausts the top of the diaphragm, allowing system pressure to flow through the diaphragm valve. When solenoid pilot valve is de-energized, the operating cycle is reversed.



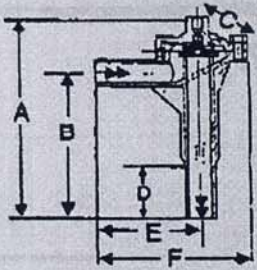
INSTALLATION

Both diaphragm and pilot valve will operate in any position. Care must be taken to remove condensate from compressed air supply and to position valves, so that rain and/or other foreign substances will not enter the exhaust ports. Connect 1 1/16" inlet port to air supply header and the 1 1/16" outlet port to the blow pipe. Connect appropriate sized tubing between the 1/8" pilot connection located on the top of the diaphragm valve to the inlet of the 1/8" pilot solenoid valve.

RCA20 DIAPHRAGM VALVES

DIMENSIONS

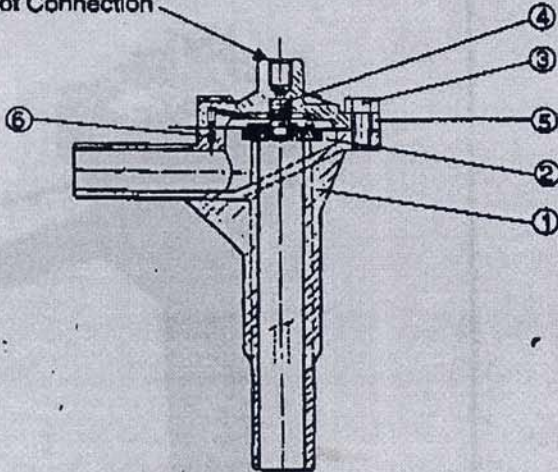
A		B		Coil WIDTH		D		E		F	
INCHES	mm	INCHES	mm	INCHES	mm	INCHES	mm	INCHES	mm	INCHES	mm
7.87	200	5.75	146	3.43	87	2.00	51	3.89	98.5	5.5	139.7



DIAPHRAGM KITS

PARTS IDENTIFICATION

1/4" Pilot Connection



ITEM	DESCRIPTION
1	PCABO BODY
2	DIAPHRAGM ASSEMBLY
3	1/4" UNC X 1/4" HEX BOLT
4	DIAPHRAGM SPRING
5	COVER
6	ROLL PIN

DIAPHRAGM KIT PARTS

Diaphragm Kit No. ~~M1284~~ ^{K2000} (Buna N/Nylon Disc)
 No. M764 (Buna N/Buna Disc)
 No. M2082 (Viton®/Viton® Disc)

Note: Kits are also suitable for Model 2005 and are interchangeable with all Models listed herein.

SERVICE

Most maintenance work can be carried out with the valve in its installed position. Before performing maintenance, electrical power and compressed air supply must be turned off and supply header must be drained of pressure. In case of valve malfunction check the following:

WILL NOT OPEN

- Confirm adequate electrical service
- Check continuity of coil
- Dirt blocking pilot valve orifice
- Dirt in pilot valve connecting tubing
- Worn pilot valve plunger
- Diaphragm perforated
- Exhaust ports blocked

WILL NOT CLOSE

- Leaking pilot valve
- Broken connecting tubing to pilot valve
- Coil energized continuously
- Pilot valve plunger jammed open
- Broken diaphragm springs
- Diaphragm bleed holes blocked
- Air supply line to the header too small

See Form No. ISI/CAS001 for RCA3D2-T Pilot Valve Instructions

Goyen Valve Corp.

WEST COAST 26227 Ave. Stanford Valencis, California 91888
 (805) 257-0588 FAX (805) 257-8990

EAST COAST 118C Airport Road - Lakewood, New Jersey 08701
 (908) 364-7800 FAX (908) 364-1358

Form No. ISI/CAS 005