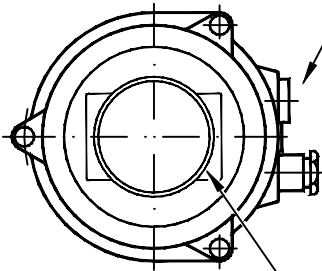
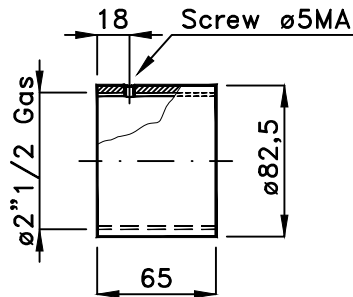


Cable inlet  
ø1/2" Gas double  
horizontal  
on the right side



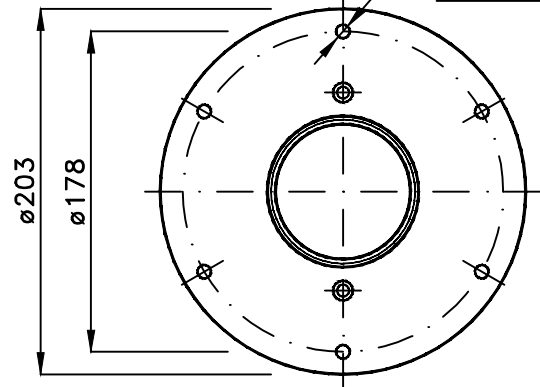
Red indicator light

### SLEEVE



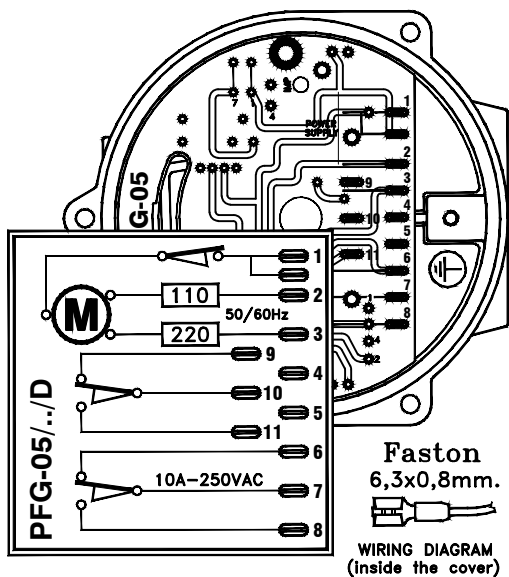
6 equidistant ø7,5 holes

### FLANGE



### IP65 Protection

Certificate number TÜV IT 13 ATEX 070  
Marking: II 1/2 D Ex ta/ib IIC T85°C IP65 Da/Db



### WIRING

- |    |                                   |
|----|-----------------------------------|
| 1  | - Common power supply             |
| 2  | - Power supply 110 Va.c. 50/60 Hz |
| 3  | - Power supply 220 Va.c. 50/60 Hz |
| 6  | - 1° NC contact 10A/250 Va.c.     |
| 7  | - 1° Common contacts              |
| 8  | - 1° NO contact 10A/250 Va.c.     |
| 9  | - 2° NC contact 10A/250 Va.c.     |
| 10 | - 2° Common contacts              |
| 11 | - 2° NO contact 10A/250 Va.c.     |

Ambient temperature range -20 a +70 °C

Weight : PFG-05 1,700 Kg - PFG-05/F 2,200 Kg

On request power supply at 24/48 Va.c. 50/60 Hz or power supply at 24 Vd.c.

Maximum operational pressure 1.1. bar

Electric motor draw 4 W

PFG-05 = with 2"1/2 Gas thread - PFG-05/F = with flange

DOUBLE CONTACT BLADED LEVEL GAUGE WITH LED LAMP PFG-05/L/D | D4160

