



Solenoid valve 2/2 way N.O. With pilot control

21W3ZB190

÷

21W7ZB500

PRESENTATION:

S.V. with pilot control for interception of fluids compatible with the construction materials.

A minimum operational pressure of 0,2 bar is required.

The materials used and the tests carried out ensure maximum reliability and duration.

USE: Automation
Heating

PIPES: G 3/4 - G 2

COILS: 8W - Ø 13
BDA - BDS - BSA 155°C (class F)
BDF - BDV 180°C (class H)

MOULDING AND BOBBIN ARE MADE BY 100% VIRGIN MATERIAL.

Max. allowable pressure (PS)

G 3/4 - G 1 25 bar

G 1 1/4 - G 2 16 bar

Ambient temperature:

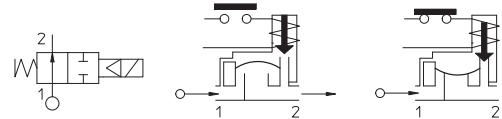
with coil class **F** - 10°C + 60°C

with coil class **H** - 10°C + 80°C



Gaskets	Temperature	Medium
B =NBR (nitrile rubber)	- 10°C + 90°C	Air, inert gas, water
E =EPDM (ethylene-propylene)	- 10°C + 140°C	Water, low pressure steam
V =FKM (fluoroelastomer)	- 10°C + 140°C	Mineral oils (2°E), gasoline gas oil

For seals other than NBR replace the letter "B" with the ones corresponding to the other seals. E.I. 21W5ZE350.



Pipe ISO 228/1	Code	Max viscosity		Ø mm	Kv l/mn	Power (watt)	Pressure		
		cSt	°E				min bar	M.O.P.D.	
							AC bar	DC bar	
G 3/4	21W3ZB190	12	~ 2	19	140	8	0,2	16	16
G 1	21W4ZB250			25	190				
G 1 1/4	21W5ZB350			35	400				
G 1 1/2	21W6ZB400			40	520			10	10
G 2	21W7ZB500			50	750				



CE Approval

(Pressure Equipment Directive 97/23/CE)

for EV 21W5÷21W7

The "ODE" reserves the right to carry out technical and aesthetic modifications without prior notification.

MATERIALS:

Body	Brass - UNI EN 12165 CW617N
Armature tube	Stainless steel AISI series 300
Fixed core	Stainless steel AISI series 400
Plunger	Stainless steel AISI series 400
Phase displacement ring	Copper - Cu 99,9%
Spring	Stainless steel AISI series 300
Seal	Standard: B=NBR
	On request: E=EPDM V=FKM
Orifice	Brass - UNI EN 12165 CW617N

On request:	
Connector	Pg 9 or Pg 11
Connector conformity	ISO 4400

FEATURES:

Electrical conformity	IEC 335
Protection degree	IP 65 EN 60529 (DIN 40050) with coil fitted by connector.

SPARE PARTS:

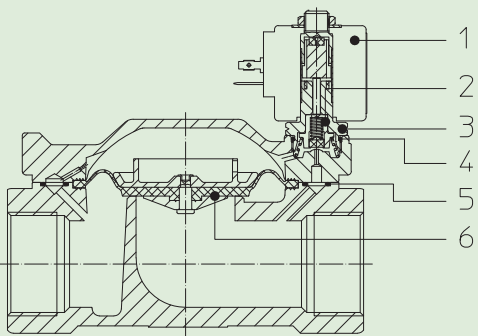
- | | | | |
|--------------------------------------------------|----------------|-------------------------------|----------------|
| 1. Coil: | | 6. Complete diaphragm: | |
| See coils list | | G 3/4-G 1 | Code R450431/B |
| 2. Complete diaphragm support: | | G 1 1/4-G 1 1/2 | Code R450466/B |
| Code R450788/B | | G 2 | Code R450432/B |
| 3. Complete armature tube without gasket: | | | |
| Code R450573 | | | |
| 4. Gasket O-Ring: | | | |
| Code R990000/B | | | |
| 5. Gasket O-Ring: | | | |
| G 3/4-G 1 | Code R990002/B | | |
| G 1 1/4-G 1 1/2 | Code R990005/B | | |
| G 2 | Code R990081/B | | |

KIT:

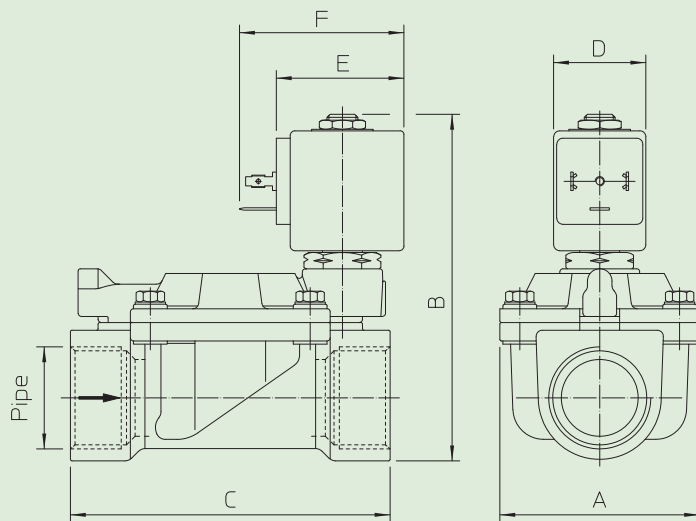
KT130ZB30-F=2+3+4

MAINTENANCE KIT:

G 3/4 - G 1
KTG0W3ZB19=2+5+6
G 1 1/4 - G 1 1/2
KTG0W5ZB35=2+5+6
G 2
KTG0W7ZB50=2+5+6



DIMENSIONS:



Type	Pipe ISO 228/1	A mm	B mm	C mm
21W3ZB190	G 3/4	65	105	104
21W4ZB250	G 1		112	
21W5ZB350	G 1 1/4	98	125	144
21W6ZB400	G 1 1/2			
21W7ZB500	G 2	118	141	172

COIL TYPE	POWER ABSORPTION			DIMENSIONS		
	W ---	Hold VA ~	Inrush VA ~	D mm	E mm	F mm
B	8	14,5	25	30	42	54



Solenoid valve 2/2 way N.C. With pilot control

21W3KB190
÷
21W7KB500

PRESENTATION:

S.V. with pilot control for interception of fluids compatible with the construction materials.

A minimum operational pressure of 0,2 bar is required.

The materials used and the tests carried out ensure maximum reliability and duration.

USE: Automation
Heating

PIPES: G 3/4 - G 2

COILS: 8W - Ø 13
BDA - BDS - BSA 155°C (class F)
BDP 160°C (high mperature)
BDF - BDV 180°C (class H)

MOULDING AND BOBBIN ARE MADE BY 100% VIRGIN MATERIAL.

Max. allowable pressure (PS)

G 3/4 - G 1 25 bar

G 1 1/4 - G 2 16 bar

Environment temperature:

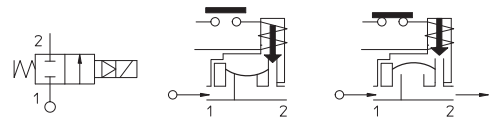
with coil class **F** or high temperature - 10°C + 60°C

with coil class **H** - 10°C + 80°C



Gaskets	Temperature		Medium
B =NBR (nitrile rubber)	- 10°C	+ 90°C	Air, inert gas, water
E =EPDM (ethylene-propylene)	- 10°C	+140°C	Water, low pressure steam
V =FKM (fluoroelastomer)	- 10°C	+140°C	Mineral oils (2°E), gasoline gas oil

For seals other than NBR replace the letter "B" with the ones corresponding to the other seals. E.I. 21W3KE190.



Pipe ISO 228/1	Code	Max viscosity		Ø mm	Kv l/mn	Power (watt)	Pressure		
		cSt	°E				min bar	M.O.P.D. AC bar DC bar	
G 3/4	21W3KB190	12	~ 2	19	140	8	0,2	16	16
G 1	21W4KB250			25	190				
G 1 1/4	21W5KB350			35	400				
G 1 1/2	21W6KB400			40	520				
G 2	21W7KB500			50	750				

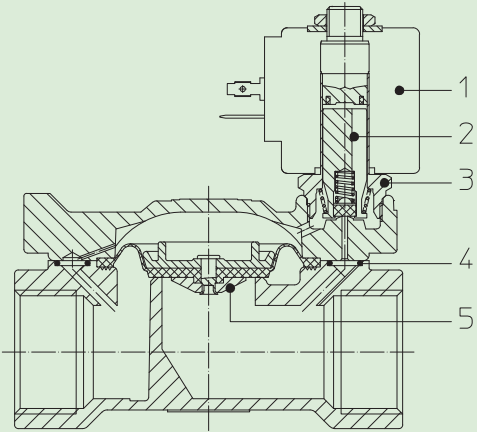


CE Approval

(Pressure Equipment Directive 97/23/CE)

for EV 21W5÷21W7

The "ODE" reserves the right to carry out technical and aesthetic modifications without prior



MATERIALS:

Body Brass - UNI EN 12165 CW617N
Armature tube Stainless steel AISI series 300
Fixed core Stainless steel AISI series 400
Plunger Stainless steel AISI series 400
Phase displacement ring Copper - Cu 99,9%
Spring Stainless steel AISI series 300
Seal Standard: B=NBR
 On request: E=EPDM V=FKM
Orifice Brass - UNI EN 12165 CW617N

On request:
Connector Pg 9 or Pg 11
Connector conformity ISO 4400

FEATURES:

Electrical conformity IEC 335
Protection degree IP 65 EN 60529 (DIN 40050)
 with coil fitted by connector.

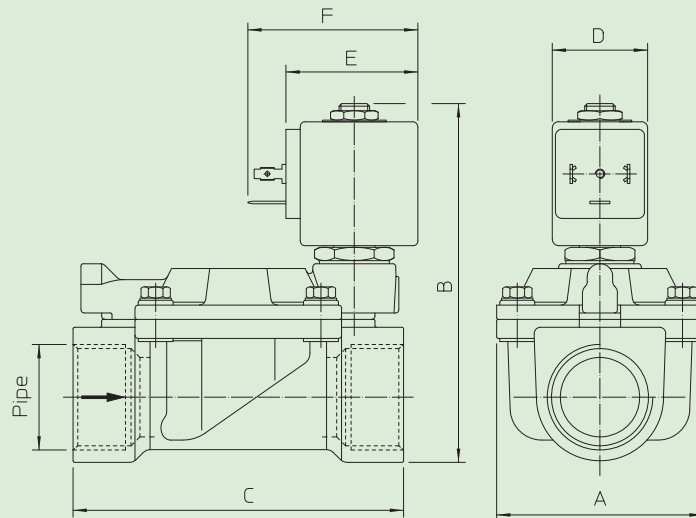
SPARE PARTS:

- 1. Coil:**
See coils list
- 2. Complete plunger:**
Code R450886/B
- 3. Complete armature tube:**
Code R450606
- 4. Gasket O-Ring:**
G 3/4-G 1 Code R990002/B
G 1 1/4-G 1 1/2 Code R990005/B
G 2 Code R990081/B
- 5. Complete diaphragm:**
G 3/4-G 1 Code R450431/B
G 1 1/4-G 1 1/2 Code R450466/B
G 2 Code R450432/B

KIT:
 KT130KB30-A=2+3

MAINTENANCE KIT:
 G 3/4-G 1
 KTG0W3KB19=2+4+5
 G 1 1/4-G 1 1/2
 KTG0W5KB35=2+4+5
 G 2
 KTG0W7KB50=2+4+5

DIMENSIONS:



Type	Pipe ISO 228/1	A mm	B mm	C mm
21W3KB190	G 3/4	65	105	104
21W4KB250	G 1		112	
21W5KB350	G 1 1/4	98	125	144
21W6KB400	G 1 1/4			
21W7KB500	G 2	118	141	172

COIL	POWER ABSORPTION		TYPE	DIMENSIONS		
	Inrush VA ~	Hold VA ~		D mm	E mm	F mm
8 W	25	14,5	B	30	42	54



Solenoid valve 2/2 way N.C. With pilot control - Progressive closing

21W3KB190-PC
÷
21W4KB250-PC

PRESENTATION:

S.V. with pilot control for interception of fluids compatible with the construction materials.

A minimum operational pressure of 0,2 bar is required.

The materials used and the tests undertaken ensure maximum reliability and duration.

USE: Automation
Heating

PIPES: G 3/4 - G 1

COILS: 8W - Ø 13
BDA - BDS - BSA 155°C (class F)
BDF - BDV 180°C (class H)

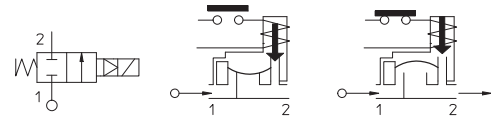
MOULDING AND BOBBIN ARE MADE BY 100% VIRGIN MATERIAL.

Max. allowable pressure (PS) 25 bar
Ambient temperature:
with coil class **F** - 10°C + 60°C
with coil class **H** - 10°C + 80°C



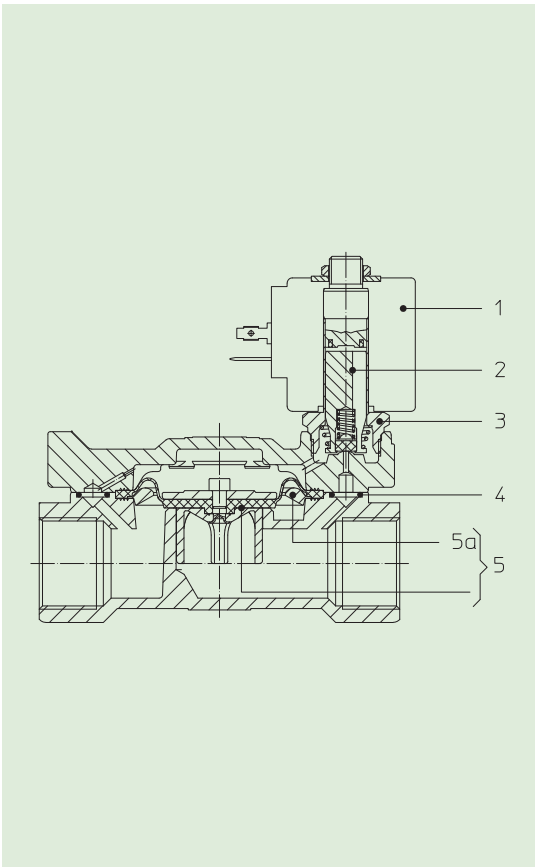
Gaskets	Temperature		Medium
B =NBR (nitrile rubber)	- 10°C	+ 90°C	Air, inert gas, water
V =FKM (fluoroelastomer)	- 10°C	+140°C	Mineral oils (2°E), gasoline gas oil

For seals other than NBR replace the letter "**B**" with the ones corresponding to the other seals. E.I. 21W3KV190-PC.



Pipe ISO 228/1	Code	Max viscosity		Ø mm	Kv l/mn	Power (watt)	Pressure		
		cSt	°E				min bar	M.O.P.D. AC bar DC bar	
G 3/4	21W3KB190-PC	12	~ 2	19	120	8	0,2	16	16
G 1	21W4KB250-PC			25	150				

The "ODE" reserves the right to carry out technical and aesthetic modifications without prior notification.



MATERIALS:

- Body** Brass - UNI EN 12165 CW617N
- Armature tube** Stainless steel AISI series 300
- Fixed core** Stainless steel AISI series 400
- Plunger** Stainless steel AISI series 400
- Phase displacement ring** Copper - Cu 99,9%
- Spring** Stainless steel AISI series 300
- Seal** Standard: B=NBR
On request: V=FKM
- Orifice** Brass - UNI EN 12165 CW617

On request:

- Connector** Pg 9 or Pg 11
- Connector conformity** ISO 4400

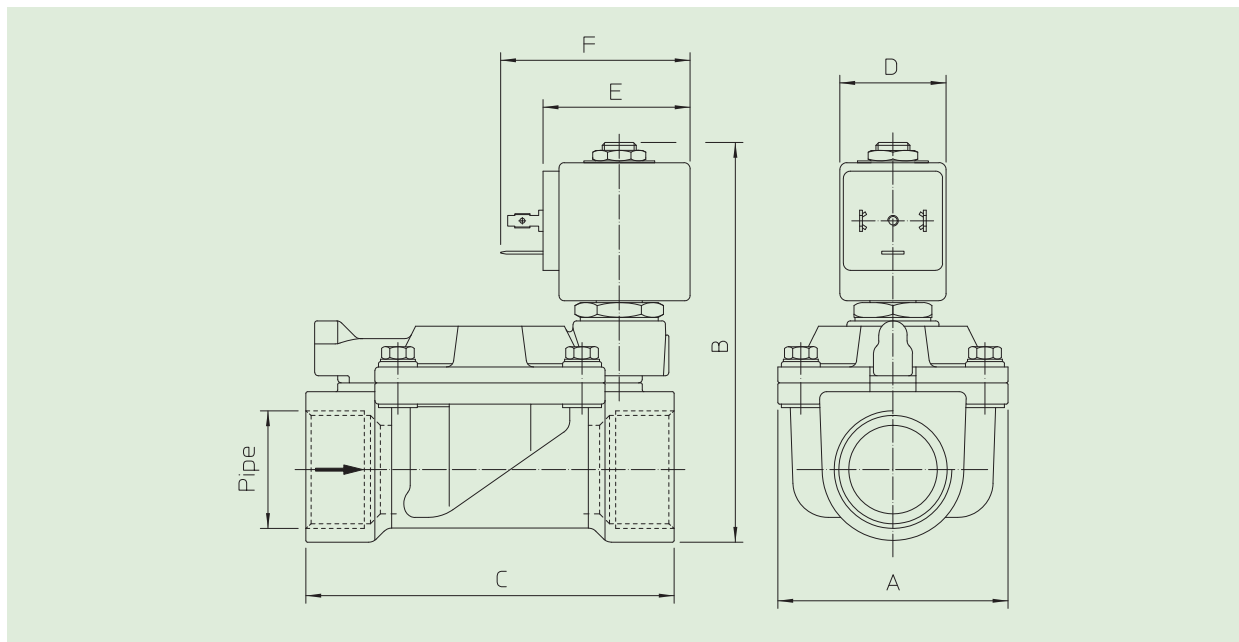
FEATURES:

- Electrical conformity** IEC 335
- Protection degree** IP 65 EN 60529 (DIN 40050)
with coil fitted by connector

SPARE PARTS:

- 1. Coil:** See coils list **KIT:** KT130KB30-A=2+3
- 2. Complete plunger:** Code R450886/B **MAINTENANCE KIT:**
- 3. Complete armature tube :** KTG0W3KB19-PC=2+4+5
Code R450606
- 4. Gasket O-Ring** Code R990002/B
- 5. Complete diaphragm:** Code R451157/B
- 5a. Diaphragm-supporting Ring:** Code R451228

DIMENSIONS:



Type	Pipe ISO 228/1	A mm	B mm	C mm
21W3KB190-PC	G 3/4	65	105	104
21W4KB250-PC	G 1		112	

COIL TYPE	POWER ABSORPTION			DIMENSIONS		
	W ==	Hold VA ~	Inrush VA ~	D mm	E mm	F mm
B	8	14,5	25	30	42	54



Solenoid valve 2/2 way N.C. With pilot control - manual operation and closing velocity control

21W3KB190-MR
÷
21W7KB500-MR

PRESENTATION:

S.V. with pilot control for interception of fluids compatible with the construction materials.

A minimum operational pressure of 0,2 bar is required.

The materials used and the tests carried out ensure maximum reliability and duration.

USE: Automation
Heating

PIPES: G 3/4 - G 2

COILS: 8W - Ø 13
BDA - BDS - BSA 155°C (class F)
BDF - BDV 180°C (class H)

MOULDING AND BOBBIN ARE MADE BY 100% VIRGIN MATERIAL.

Max. allowable pressure (PS)

G 3/4 - G 1 25 bar

G 1 1/4 - G 2 16 bar

Ambient temperature:

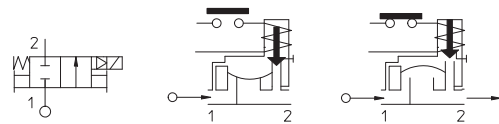
with coil class **F** - 10°C + 60°C

with coil class **H** - 10°C + 80°C



Gaskets	Temperature	Medium
B =NBR (nitrile rubber)	- 10°C + 90°C	Air, inert gas, water
E =EPDM (ethylene-propylene)	- 10°C +140°C	Water, low pressure steam
V =FKM (fluoroelastomer)	- 10°C +140°C	Mineral oils (2°E), gasoline gas oil

For seals other than NBR replace the letter "B" with the ones corresponding to the other seals. E.I. 21W3E190-MR.



Pipe ISO 228/1	Code	Max viscosity		Ø mm	Kv l/mn	Power (watt)	Pressure		
		cSt	°E				min bar	M.O.P.D. AC bar DC bar	
G 3/4	21W3KB190-MR	12	~ 2	19	140	8	0,2	16	16
G 1	21W4KB250-MR			25	190				
G 1 1/4	21W5KB350-MR			35	400			10	10
G 1 1/2	21W6KB400-MR			40	520				
G 2	21W7KB500-MR			50	750				



CE Approval

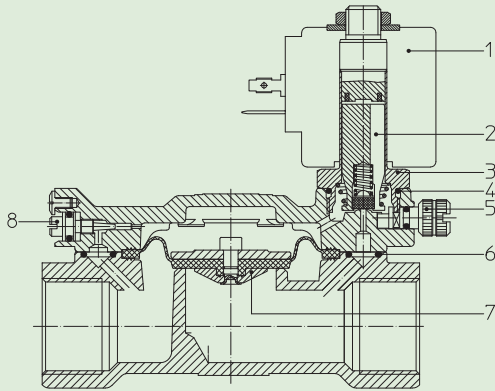
(Pressure Equipment Directive 97/23/CE)

for EV 21W5+21W7

Note

Available on request and with minimum quantities.

The "ODE" reserves the right to carry out technical and aesthetic modifications without prior notification.



MATERIALS:

- Body** Brass - UNI EN 12165 CW617N
- Armature tube** Stainless steel AISI series 300
- Fixed core** Stainless steel AISI series 400
- Plunger** Stainless steel AISI series 400
- Phase displacement ring** Copper - Cu 99,9%
- Spring** Stainless steel AISI series 300
- Seal** Standard: B=NBR
On request: E=EPDM V=FKM
- Orifice** Brass - UNI EN 12165 CW617N

- On request:**
- Connector** Pg 9 or Pg 11
- Connector conformity** ISO 4400

FEATURES:

- Electrical conformity** IEC 335
- Protection degree** IP 65 EN 60529 (DIN 40050)
with coil fitted by connector.

SPARE PARTS:

- 1. Coil:** See coils list
- 2. Complete plunger:** Code R450886/B
- 3. Complete armature tube :** Code R450603
- 4. Gasket O-Ring** Code R990000/B
- 5. Manual operation:** Code R451772/B
- 6. Gasket O-Ring:** G 3/4-G 1 Code R990002/B
G 1 1/4-G 1 1/2 Code R990005/B
G 2 Code R990081/B
- 7. Complete diaphragm:** G 3/4-G 1 Code R450431/B
G 1 1/4-G 1 1/2 Code R450466/B
G 2 Code R450432/B
- 8. Regulation screw:** Code R450728/B

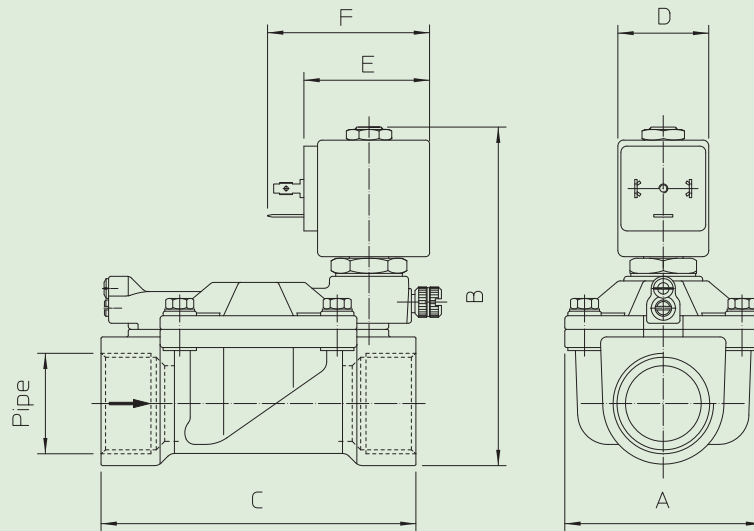
KIT:

KT130KB30-F= 2+3+4

MAINTENANCE KIT

KTG0W3KB19= 2+6+7
KTG0W5KB35= 2+6+7
KTG0W7KB50= 2+6+7

DIMENSIONS:



Type	Pipe ISO 228/1	A mm	B mm	C mm
21W3KB190-MR	G 3/4	65	105	104
21W4KB250-MR	G 1		112	
21W5KB350-MR	G 1 1/4	98	125	144
21W6KB400-MR	G 1 1/2		141	
21W7KB500-MR	G 2	118	141	172

COIL TYPE	POWER ABSORPTION			DIMENSIONS		
	W ---	Hold VA ~	Inrush VA ~	D mm	E mm	F mm
B	8	14,5	25	30	42	54



Solenoid valve 2/2 way N.C. With pilot control - Latching coils

21W3KB190
21W7KB500
Latching coils

PRESENTATION:

S.V. with pilot control for interception of fluids compatible with the construction materials.

Opening is obtained by a 50 msec pulse, and closing by another 50 msec pulse, with reversed polarity.

A minimum operational pressure of 0,2 bar is required.

The materials used and the tests carried out ensure maximum reliability and duration.

USE: Automation
Heating

PIPES: G 3/4 - G 2

COILS: BDA2X006LS 155°C(class F)
BDA2X009LS 155°C(class F)
BDA2X012LS 155°C(class F)
BDA05009LS 155°C(class F)
BDA05012LS 155°C(class F)
BDA05024LS 155°C(class F)

MOULDING AND BOBBIN ARE MADE BY 100% VIRGIN MATERIAL.%.

Max. allowable pressure (PS)

G 3/4 - G 1

25 bar

G 1 1/4 - G 2

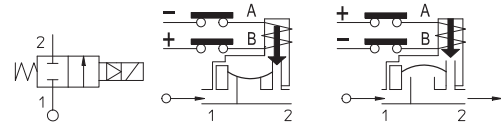
16 bar

Environment temperature:

- 10°C + 60°C



Gaskets	Temperature	Medium
B =NBR (nitrile rubber)	- 10°C +90°C	Air, inert gas, water
E =EPDM (ethylene-propylene)	- 10°C +140°C	Water, low pressure steam
V =FKM (fluoroelastomer)	- 10°C + 140°C	Mineral oils (2°E), gasoline gas oil



For seals other than NBR replace the letter "B" with the ones corresponding to the other seals. E.I. 21W3KV190.

Pipe ISO 228/1	Code	Coils code	Voltages VDC	Max viscosity		Ø mm	Kv l/mn	Power (watt)	Pressure	
				cSt	°E				min bar	M.O.P.D. DC bar
G 3/4 and G 1	21W3KB190 and 21W4KB250	BDA2X006LS	6	12	~ 2	19	140	2,5	0,2	16
		BDA2X009LS	9							
		BDA2X012LS	12							
		BDA05009LS	9	12	~ 2	25	190	5		
		BDA05012LS	12							
		BDA05024LS	24							
G 1 1/4 and G 1 1/2 and G 2	21W5KB350 e 21W6KB400 and 21W7KB500	BDA2X006LS	6	12	~ 2	35	400	2,5	10	
		BDA2X009LS	9							
		BDA2X012LS	12							
		BDA05009LS	9	12	~ 2	40	520	5		
		BDA05012LS	12							
		BDA05024LS	24							



CE Approval

(Pressure Equipment Directive 97/23/CE)

for S.V. 21W5÷21W7

Note

Available on request and with minimum quantities.

The "ODE" reserves the right to carry out technical and aesthetic modifications without prior notification.

MATERIALS:

Body Brass - UNI EN 12165 CW617N
Armature tube Stainless steel AISI series 300
Fixed core Stainless steel AISI series 400
Plunger Stainless steel AISI series 400
Phase displacement ring Copper - Cu 99,9%
Spring Stainless steel AISI series 300
Shutter Standard: B=NBR
 On request: E=EPDM V=FKM
Orifice Brass - UNI EN 12165 CW617N

On request:
Connector Pg 9 or Pg 11
Connector conformity ISO 4400

FEATURES:

Electrical conformity IEC 335
Protection degree IP 65 EN 60529 (DIN 40050)
 with coil fitted by connector.

SPARE PARTS:

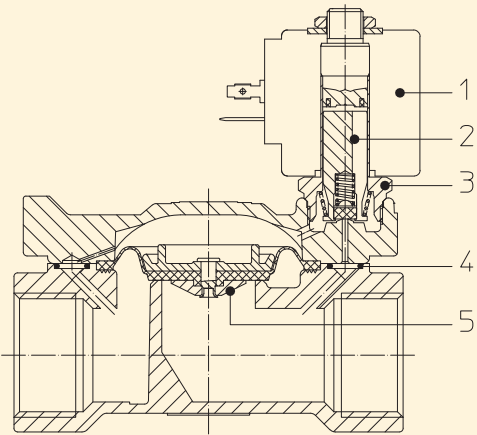
- 1. Coil:**
 BDA2X006LS G 2 Cod. R990081/B
 BDA2X009LS
 BDA2X012LS
 BDA05009LS
 BDA05012LS
 BDA05024LS
- 2. Complete plunger:**
 Code R450886/B
- 3. Complete armature tube:**
 Code R450606
- 4. Gasket O-Ring:**
 G 3/4 - G 1 Code R990002/B
 G 1 1/4- G 1 1/2 Code R990005/B
- 5. Complete diaphragm:**
 G 3/4-G 1 Code R450431/B
 G 1 1/4 - G 1 1/2 Code R450466/B
 G 2 Code R450432/B

KIT:

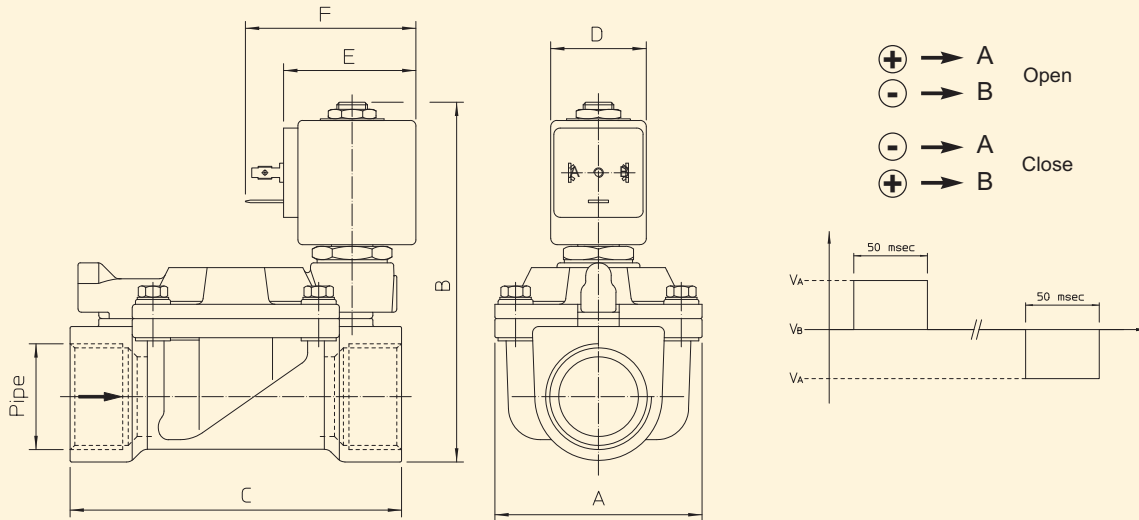
KT130KB30-A=2+3

MAINTENANCE KIT:

KTG0W3KB19=2+4+5



DIMENSIONS:



Type	Pipe ISO 228/1	A mm	B mm	C mm	D mm	E mm	F mm
21W3KB190	G 3/4	65	105	104	30	42	54
21W4KB250	G 1		112				
21W5KB350	G 1 1/4	98	125	144			
21W6KB400	G 1 1/2						
21W7KB500	G 2	118	141	172			



Solenoid valve 2/2 way N.C. With pilot control

21WN3K0B130
÷
21WN9KB500

PRESENTATION:

S.V. with pilot control for interception of fluids compatible with the construction materials.

A minimum operational pressure of 0,2 bar is required.

The materials used and the tests carried out ensure maximum reliability and duration.

USE: Automation
Heating

PIPES: 3/8 NPT - 2 NPT

COILS: 8W - Ø 13
BDA - BDS - BSA 155°C (class F)
BDF - BDV 180°C (class H)

MOULDING AND BOBBIN ARE MADE BY 100% VIRGIN MATERIAL.

Max. allowable pressure (PS)

3/4 NPT - 1 NPT 25 bar

1 1/4 NPT - 2 NPT 16 bar

Ambient temperature:

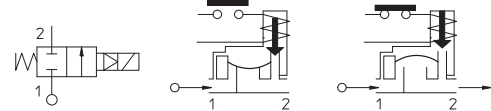
with coil class **F** - 10°C + 60°C

with coil class **H** - 10°C + 80°C



Gaskets	Temperature		Medium
B =NBR (nitrile rubber)	- 10°C	+ 90°C	Air, inert gas, water
E =EPDM (ethylene-propylene)	- 10°C	+140°C	Water, low pressure steam
V =FKM (fluoroelastomer)	- 10°C	+140°C	Mineral oils (2°E), gasoline gas oil

For seals other than NBR replace the letter "B" with the ones corresponding to the other seals. E.I. 21WN5KV190.



Pipe ANSI/ASME BI.20.1	Code	Max viscosity		Ø mm	Kv l/mn	Power (watt)	Pressure				
		cSt	°E				min bar	M.O.P.D. AC bar DC bar			
3/8 NPT	21WN3K0B130	12	~ 2	13	60	8	0,2	16	16		
1/2 NPT	21WN4K0B130				70						
3/4 NPT	21WN5KB190				140						
1 NPT	21WN6KB250			25	190			40	520	10	10
1 1/4 NPT	21WN7KB350			35	400						
1 1/2 NPT	21WN8KB400			40	520						
2 NPT	21WN9KB500			50	750			50	750		



CE Approval

(Pressure Equipment Directive 97/23/CE)

for S.V. 21WN7+21WN9

The "ODE" reserves the right to carry out technical and aesthetic modifications without prior notification.

MATERIALS:

Body	Brass - UNI EN 12165 CW617N
Armature tube	Stainless steel AISI series 300
Fixed core	Stainless steel AISI series 400
Plunger	Stainless steel AISI series 400
Phase displacement ring	Copper - Cu 99,9%
Spring	Stainless steel AISI series 300
Seal	B=NBR
Orifice	Brass - UNI EN 12165 CW617N

On request:

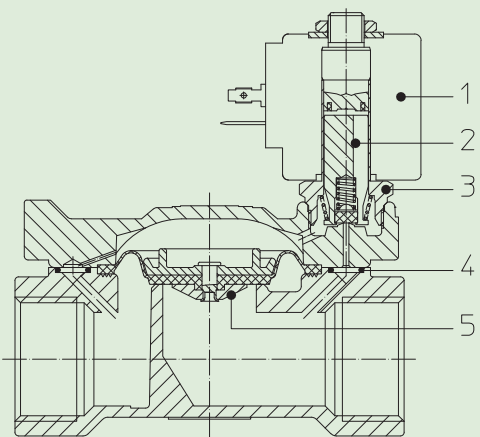
Connector	Pg 9 or Pg 11
Connector conformity	ISO 4400

FEATURES:

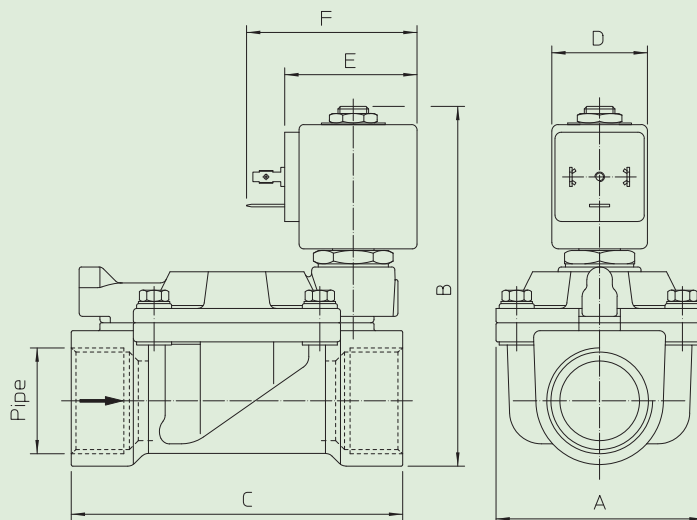
Electrical conformity	IEC 335
Protection degree	IP 65 EN 60529 (DIN 40050) with coil fitted by connector.

SPARE PARTS:

1. Coil:	1 1/4-1 1/2 NPT Code R450466/B
See coils list	2 NPT Code R450432/B
2. Complete plunger:	
Code R450886/B	KIT:
3. Complete armature tube:	KT130KB30-A=2+3
Code R450606	
4. Gasket O-Ring:	
3/8 -1/2 NPT Code R990300/B	3/8 - 1/2 NPT
3/4 -1 NPT Code R990002/B	KTGWA3K0B13=2+4+5
1 1/4 -1 1/2 NPT Code R990005/B	3/4 - 1 NPT
2 NPT Code R990081/B	KTG0W3KB19=2+4+5
5. Complete diaphragm:	1 1/4 - 1 1/2 NPT
3/8 -1/2 NPT Code R452186/B	KTG0W5KB35=2+4+5
3/4 - 1 NPT Code R450431/B	2 NPT
	KTG0W7KB50=2+4+5



DIMENSIONS:



Type	Pipe	A mm	B mm	C mm
21WN3K0B130	3/8 NPT	40	97	60
21WN4K0B130	1/2 NPT		66	
21WN5KB190	3/4 NPT	65	105	104
21WN6KB250	1 NPT		112	
21WN7KB350	1 1/4 NPT	98	125	144
21WN8KB400	1 1/2 NPT			
21WN9KB500	2 NPT	118	141	172

COIL TYPE	POWER ABSORPTION			DIMENSIONS		
	W ---	Hold VA ~	Inrush VA ~	D mm	E mm	F mm
B	8	14,5	25	30	42	54



Solenoid valve 2/2 way N.O. With pilot control

21WN5ZB190

÷

21WN9ZB500

PRESENTATION:

S.V. with pilot control for interception of fluids compatible with the construction materials.

A minimum operational pressure of 0,2 bar is required.

The materials used and the tests carried out ensure maximum reliability and duration.

USE: Automation
Heating

PIPES: 3/4 NPT - 2 NPT

COIL: 8W - Ø 13
BDA - BSA 155°C (class F)
BDV 180°C (class H)

**COIL HOUSING AND COIL FORMER MATERIAL ARE
MADE BY 100% VIRGIN MATERIAL.**

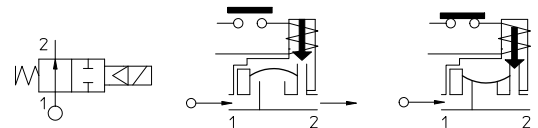
Max. allowable pressure (PS)
3/4 NPT - 1 NPT 25 bar
1 1/4 NPT - 2 NPT 16 bar

See coils catalogue page for its compatibility.



Gaskets	Temperature		Medium
B =NBR (nitrile rubber)	- 10°C	+ 90°C	Air, inert gas, water
V =FKM (fluoroelastomer)	- 10°C	+ 140°C	Mineral oils (2°E), gasoline gas oil, fuel oils (7°E)
E =EPDM (ethylene-propylene)	- 10°C	+140°C	Water, low pressure steam

For seals other than NBR replace the letter "B" with the ones corresponding to the other seals. E.I. 21WN5ZV190.



Pipe ANSI/ASME Bl.20.1	Code	Max viscosity		Ø mm	Kv l/mn	Power (watt)	Pressure		
		cSt	°E				min	M.O.P.D.	
							bar	AC bar	DC bar
3/4 NPT	21WN5ZB190	12	~ 2	19	140	8	0,2	16	16
1 NPT	21WN6ZB250			25	190				
1 1/4 NPT	21WN7ZB350			35	400				
1 1/2 NPT	21WN8ZB400			40	520				
2 NPT	21WN9ZB500			50	750				
								10	10



CE Approval

(Pressure Equipment Directive 97/23/CE)

for S.V. 21WN5÷21WN7

Note

Available on request and with minimum quantities.

The "ODE" reserves the right to carry out technical and aesthetic modifications without prior notification.

MATERIALS:

Body	Brass - UNI EN 12165 CW617N
Armature tube	Stainless steel AISI series 300
Fixed core	Stainless steel AISI series 400
Plunger	Stainless steel AISI series 400
Phase displacement ring	Copper - Cu 99,9%
Spring	Stainless steel AISI series 300
Seal	Standard: B=NBR On request: E=EPDM V=FKM
Orifice	Brass - UNI EN 12165 CW617N

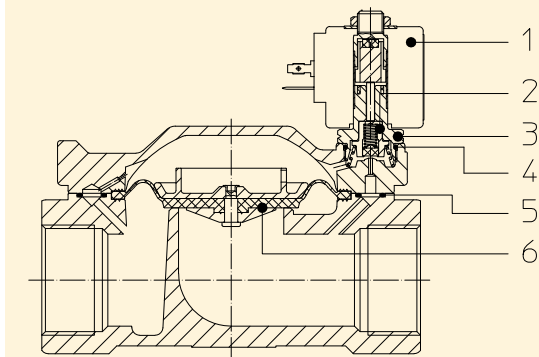
On request:	Pg 9 or Pg 11
Connector	ISO 4400
Connector conformity	

FEATURES:

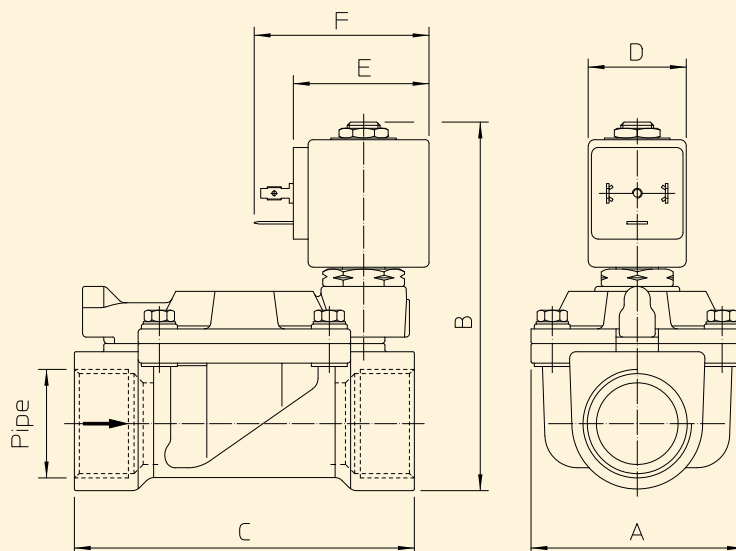
Electrical conformity	IEC 335
Protection degree	IP 65 EN 60529 (DIN 40050) with coil fitted by connector.

SPARE PARTS:

1. Coil: See coils list	6. Complete diaphragm: G 3/4-G 1 Code R450431/B G 1 1/4-G 1 1/2 Code R450466/B G 2 Code R450432/B
2. Complete diaphragm support: Code R450788/B	
3. Complete armature tube without gasket: Code R450573	KIT: KT130ZB30-F=2+3+4
4. Gasket O-Ring: Code R990000/B	KIT MANUTENZIONE: G 3/4 - G 1 KTG0W3ZB19=2+5+6 G 1 1/4 - G 1 1/2 KTG0W5ZB35=2+5+6 G 2 KTG0W7ZB50=2+5+6
5. Gasket O-Ring: G 3/4-G 1 Code R990002/B G 1 1/4-G 1 1/2 Code R990005/B G 2 Code R990081/B	



DIMENSIONS:



Type	Pipe	A mm	B mm	C mm
21WN5ZB190	3/4 NPT	65	105	104
21WN6ZB250	1 NPT		112	
21WN7ZB350	1 1/4 NPT	98	125	144
21WN8ZB400	1 1/2 NPT			
21WN9ZB500	2 NPT	118	141	172

COIL TYPE	POWER ABSORPTION			DIMENSIONI		
	W ---	Hold VA ~	Inrush VA ~	D mm	E mm	F mm
B	8	14,5	25	30	42	54