



**Valve 2/2 way - angle seat/process valve**  
**Normally Open - Flow direction below**  
**the seat - pneumatically operated**

**21IA4T15GA2-A**  
**÷**  
**21IA9T50GA2-A**

**PRESENTATION:**

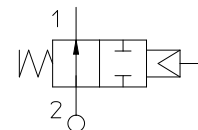
- High flow rate due to the angle seat configuration.
- Anti-water hammer feature with the fluid entry below the seat.
- Electrical operation is easy with the addition of a solenoid pilot.
- Stainless steel body and corrosion resistant actuator.
- The pneumatic actuator can be rotated through 360 degrees.
- Optical position indicator.
- Internal seals are self adjusting for long life.
- Easily convertible from N.C. to N.O. or double acting.
- Universal mounting - any mounting orientation is acceptable.

**USE:** Automation, Heating, Water, Hot water, Steam (180°C), Aggressive and food fluids

**PIPES:** G 1/2 - G 2

**VALVE FEATURES:**

Fluid Temperature - 10°C + 180°C  
 Ambient temperature - 40°C + 60°C  
 (according to Atex requirements)  
 Viscosity of the fluid max 600 cSt  
 Material Stainless steel AISI series 316  
 Seal PTFE  
 Packing gland PTFE, FKM



**PILOT ACTUATOR FEATURES:**

Fluid Dry Air or lubricated, gas and neutral fluids  
 Fluid Temperature max + 60°C  
 Body Polyamide 66 with 30% glass fibre  
 Gaskets NBR  
 Actuator Ø 70

| Pipe<br>ISO 228/1 | Code          | Ø<br>mm | Kv<br>l/mn | Actuator pilot pressure (bar) |     | Differential pressure (bar) |                      | Max. allowable pressure<br>PS (bar) | Weight<br>Kg |
|-------------------|---------------|---------|------------|-------------------------------|-----|-----------------------------|----------------------|-------------------------------------|--------------|
|                   |               |         |            | min                           | max | min                         | max                  |                                     |              |
| G 1/2             | 21IA4T15GA2-A | 15      | 80         | 1,5                           | 10  | 0                           | (See pressure graph) | 40                                  | 1,2          |
| G 3/4             | 21IA5T20GA2-A | 20      | 150        |                               |     |                             |                      |                                     | 1,3          |
| G 1               | 21IA6T25GA2-A | 25      | 190        |                               |     |                             |                      |                                     | 1,6          |
| G 1 1/4           | 21IA7T32GA2-A | 32      | 340        |                               |     |                             |                      | 25                                  | 2,2          |
| G1 1/2            | 21IA8T40GA2-A | 40      | 430        |                               |     |                             |                      |                                     | 2,5          |
| G 2               | 21IA9T50GA2-A | 50      | 620        |                               |     |                             |                      |                                     | 3,7          |



**CE Approval**  
 (Pressure Equipment Directive 97/23/CE)  
 for Valve 21IA7 ÷ 21IA9



(According to Directive 94/9/CE ATEX )  
 II 2G c IIC TX

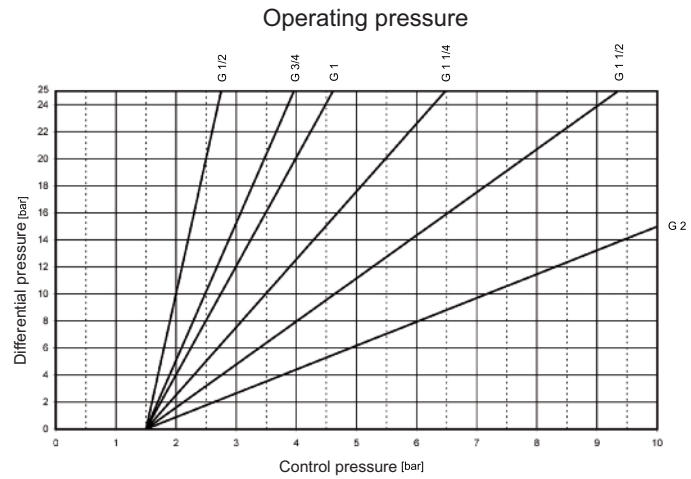
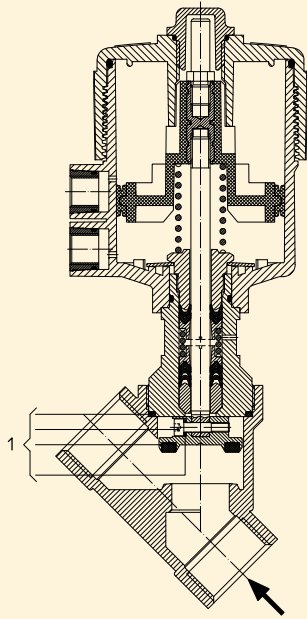
**Note**

Available on request pilot series S.V. 31A2 according to Atex requirements (see catalogue page)  
 Together with male thread nipple male G 1/4 - G 1/4  
 Material compatibility with the fluids to be checked.

The "ODE" reserves the right to carry out technical and aesthetic modifications without prior notification.

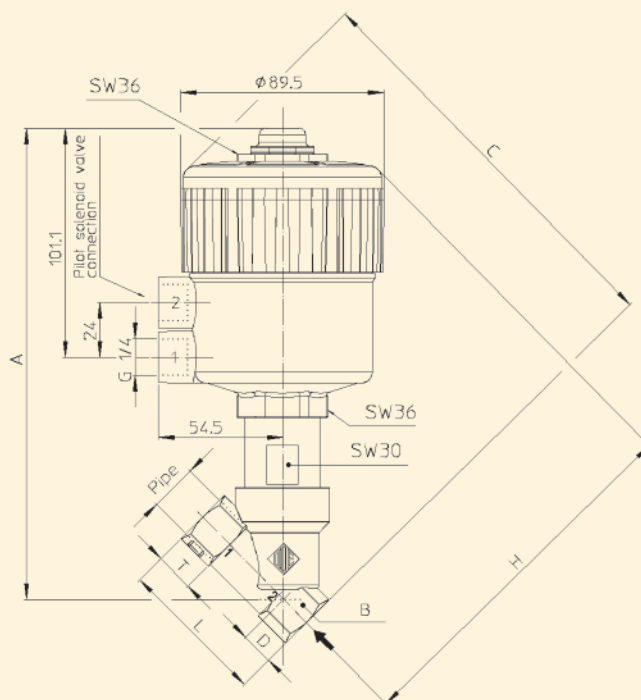
**MAINTENANCE KIT:**

1.  
 G 1/2 R500045  
 G 3/4 R500048  
 G 1 R500051  
 G 1 1/4 R500054  
 G 1 1/2 R500057  
 G 2 R500075



**DIMENSIONS:**

| Pipe<br>ISO 228/1 | A<br>mm | B<br>mm | C<br>mm | D<br>mm | H<br>mm | L<br>mm | T<br>mm |
|-------------------|---------|---------|---------|---------|---------|---------|---------|
| G 1/2             | 206,8   | SW 27   | 178,7   | 15,4    | 163,3   | 65      | 17      |
| G 3/4             | 211,7   | SW 32   | 188,6   | 21,9    | 166,7   | 75,5    | 19      |
| G 1               | 220,1   | SW 41   | 197,8   | 25,1    | 172,7   | 90      | 21      |
| G 1 1/4           | 235,9   | SW 50   | 212,3   | 28,5    | 183,8   | 110     | 24      |
| G 1 1/2           | 238,9   | SW 55   | 217,0   | 31,0    | 186     | 122     | 25,2    |
| G 2               | 247,8   | SW 70   | 229,7   | 37,5    | 192,2   | 151     | 28,5    |





**Valve 2/2 way - angle seat/process valve  
Normally Closed - Flow direction below  
the seat - pneumatically operated**

**21IA4T15GC2-A  
÷  
21IA9T50GC2-A**

**PRESENTATION:**

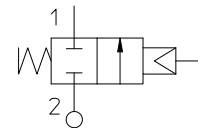
- High flow rate due to the angle seat configuration.
- Anti-water hammer feature with the fluid entry below the seat.
- Electrical operation is easy with the addition of a solenoid pilot.
- Stainless steel body and corrosion resistant actuator.
- The pneumatic actuator can be rotated through 360 degrees.
- Optical position indicator.
- Internal seals are self adjusting for long life.
- Easily convertible from N.C. to N.O. or double acting.
- Universal mounting - any mounting orientation is acceptable.

**USE:** Automation, Heating, Water, Hot water, Steam (180°C), Aggressive and food fluids

**PIPES:** G 1/2 - G 2

**VALVE FEATURES:**

Fluid Temperature - 10°C + 180°C  
 Ambient temperature - 40°C + 60°C  
 (according to Atex requirements)  
 Viscosity of the fluid max 600 cSt  
 Material Stainless steel AISI series 316  
 Seal PTFE  
 Packing gland PTFE, FKM



**PILOT ACTUATOR FEATURES:**

Fluid Dry Air or lubricated, gas and neutral fluids  
 Fluid Temperature max + 60°C  
 Body Polyamide 66 with 30% glass fibre  
 Gaskets NBR  
 Actuator Ø 70

| Pipe<br>ISO 228/1 | Code          | Ø<br>mm | Kv<br>l/mn | Actuator pilot pressure (bar) |     | Differential pressure (bar) |     | Max. allowable pressure<br>PS (bar) | Weight<br>Kg |
|-------------------|---------------|---------|------------|-------------------------------|-----|-----------------------------|-----|-------------------------------------|--------------|
|                   |               |         |            | min                           | max | min                         | max |                                     |              |
| G 1/2             | 21IA4T15GC2-A | 15      | 80         | 4                             | 10  | 0                           | 16  | 40                                  | 1,4          |
| G 3/4             | 21IA5T20GC2-A | 20      | 150        |                               |     |                             | 10  |                                     | 1,5          |
| G 1               | 21IA6T25GC2-A | 25      | 190        |                               |     |                             | 10  |                                     | 1,8          |
| G 1 1/4           | 21IA7T32GC2-A | 32      | 340        |                               |     |                             | 7   | 25                                  | 2,4          |
| G 1 1/2           | 21IA8T40GC2-A | 40      | 430        |                               |     |                             | 4,5 |                                     | 2,7          |
| G 2               | 21IA9T50GC2-A | 50      | 620        |                               |     |                             | 3   | 16                                  | 3,9          |



**CE Approval**  
 (Pressure Equipment Directive 97/23/CE)  
 for Valve 21IA7 ÷ 21IA9



(According to Directive 94/9/CE ATEX )  
 II 2G c IIC TX

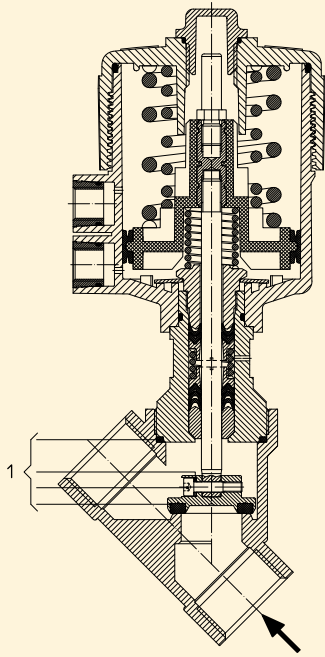
**Note**

Available on request pilot series S.V. 31A2 according to Atex requirements (see catalogue page)  
 Together with male thread nipple male G 1/4 - G 1/4  
 Material compatibility with the fluids to be checked.

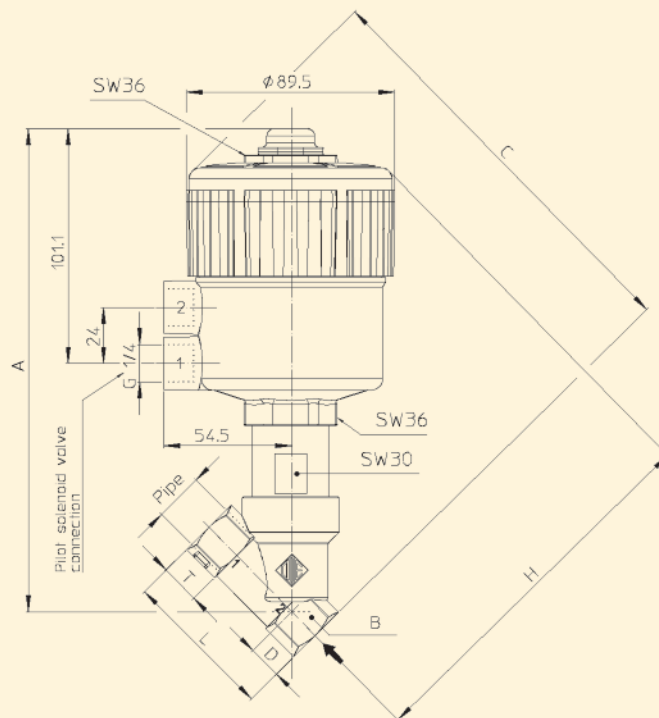
The "ODE" reserves the right to carry out technical and aesthetic modifications without prior notification.

**MAINTENANCE KIT:****1.**

G 1/2 R500045  
 G 3/4 R500048  
 G 1 R500051  
 G 1 1/4 R500054  
 G 1 1/2 R500057  
 G 2 R500075

**DIMENSIONS:**

| Pipe<br>ISO 228/1 | A<br>mm | B<br>mm | C<br>mm | D<br>mm | H<br>mm | L<br>mm | T<br>mm |
|-------------------|---------|---------|---------|---------|---------|---------|---------|
| G 1/2             | 206,8   | SW 27   | 178,7   | 15,4    | 163,3   | 65      | 17      |
| G 3/4             | 211,7   | SW 32   | 188,6   | 21,9    | 166,7   | 75,5    | 19      |
| G 1               | 220,1   | SW 41   | 197,8   | 25,1    | 172,7   | 90      | 21      |
| G 1 1/4           | 235,9   | SW 50   | 212,3   | 28,5    | 183,8   | 110     | 24      |
| G 1 1/2           | 238,9   | SW 55   | 217,0   | 31,0    | 186     | 122     | 25,2    |
| G 2               | 247,8   | SW 70   | 229,7   | 37,5    | 192,2   | 151     | 28,5    |





**Valve 2/2 way - angle seat/process valve  
N.O. - Flow direction below the seat -  
pneumatically operated**

**21IA4T15NA2-A  
÷  
21IA9T50NA2-A**

**PRESENTATION:**

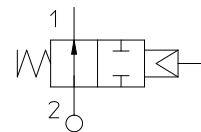
- High flow rate due to the angle seat configuration.
- Anti-water hammer feature with the fluid entry below the seat.
- Electrical operation is easy with the addition of a solenoid pilot.
- Stainless steel body and corrosion resistant actuator.
- The pneumatic actuator can be rotated through 360 degrees.
- Optical position indicator.
- Internal seals are self adjusting for long life.
- Easily convertible from N.C. to N.O. or double acting.
- Universal mounting - any mounting orientation is acceptable.

**USE:** Automation, Heating, Water, Hot water, Steam (180°C), Aggressive and food fluids

**PIPES:** 1/2 NPT - 2 NPT

**VALVE FEATURES:**

Fluid Temperature - 10°C + 180°C  
 Ambient temperature - 40°C + 60°C  
 (according to Atex requirements)  
 Viscosity of the fluid max 600 cSt  
 Material Stainless steel AISI series 316  
 Seal PTFE  
 Packing gland PTFE, FKM



**PILOT ACTUATOR FEATURES:**

Fluid Dry Air or lubricated, gas and neutral fluids  
 Fluid Temperature max + 60°C  
 Body Polyamide 66 with 30% glass fibre  
 Gaskets NBR  
 Actuator Ø 70

| Pipe<br>ANSI/ASME<br>Bl.20.1 | Code          | Ø<br>mm | Kv<br>l/mn | Actuator pilot pressure (bar) |     | Differential pressure (bar) |                      | Max. allowable pressure<br>PS (bar) | Weight<br>Kg |
|------------------------------|---------------|---------|------------|-------------------------------|-----|-----------------------------|----------------------|-------------------------------------|--------------|
|                              |               |         |            | min                           | max | min                         | max                  |                                     |              |
| 1/2 NPT                      | 21IA4T15NA2-A | 15      | 80         | 1,5                           | 10  | 0                           | (See pressure graph) | 40                                  | 1,2          |
| 3/4 NPT                      | 21IA5T20NA2-A | 20      | 150        |                               |     |                             |                      |                                     | 1,3          |
| 1 NPT                        | 21IA6T25NA2-A | 25      | 190        |                               |     |                             |                      |                                     | 1,6          |
| 1 1/4 NPT                    | 21IA7T32NA2-A | 32      | 340        |                               |     |                             |                      | 25                                  | 2,2          |
| 1 1/2 NPT                    | 21IA8T40NA2-A | 40      | 430        |                               |     |                             |                      |                                     | 2,5          |
| 2 NPT                        | 21IA9T50NA2-A | 50      | 620        |                               |     |                             |                      |                                     | 3,7          |



**CE Approval**  
 (Pressure Equipment Directive 97/23/CE)  
 for Valve 21IA7 ÷ 21IA9



(According to Directive 94/9/CE ATEX )  
 II 2G c IIC TX

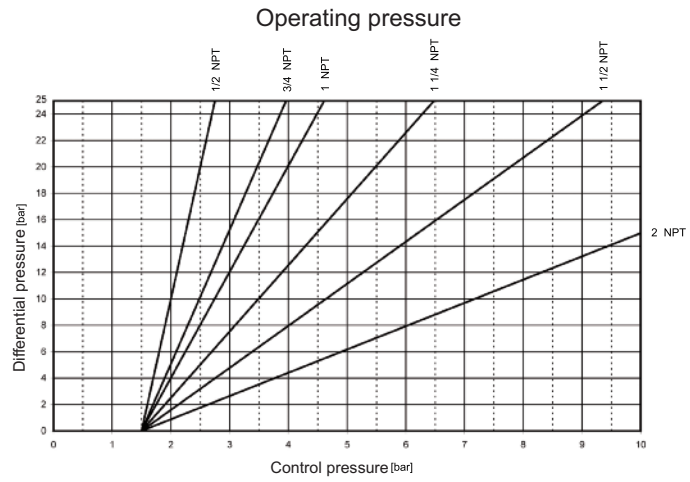
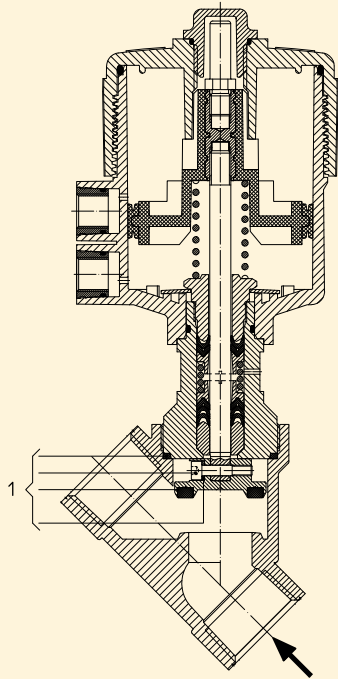
**Note**

Available on request pilot series S.V. 31A2 according to Atex requirements (see catalogue page)  
 Together with male thread nipple male 1/4 NPT - 1/4 NPT  
 Material compatibility with the fluids to be checked.

The "ODE" reserves the right to carry out technical and aesthetic modifications without prior notification.

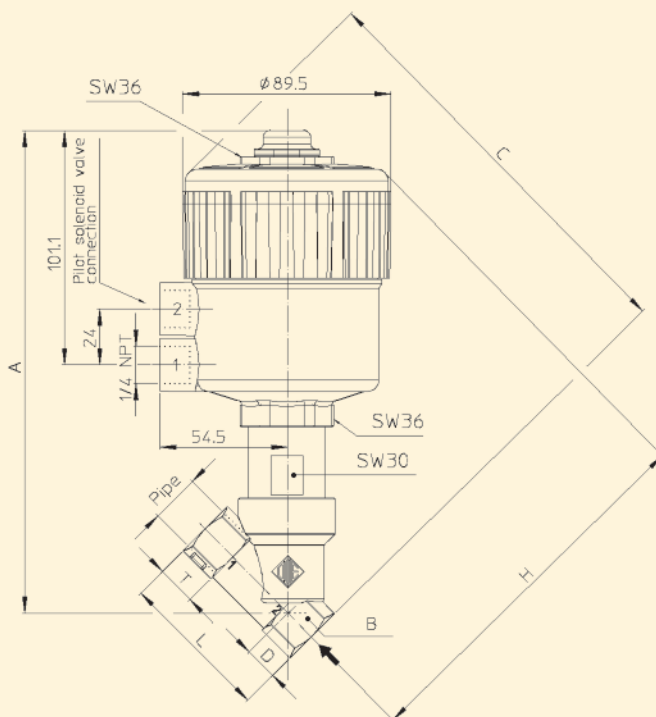
**MAINTENANCE KIT:**

- 1.
- 1/2 NPT R500045
- 3/4 NPT R500048
- 1 NPT R500051
- 1 1/4 NPT R500054
- 1 1/2 NPT R500057
- 2 NPT R500075



**DIMENSIONS:**

| Pipe<br>ANSI/ASME<br>Bl.20.1 | A<br>mm | B<br>mm | C<br>mm | D<br>mm | H<br>mm | L<br>mm | T<br>mm |
|------------------------------|---------|---------|---------|---------|---------|---------|---------|
| 1/2 NPT                      | 206,8   | SW 27   | 178,7   | 15,4    | 163,3   | 65      | 17      |
| 3/4 NPT                      | 211,7   | SW 32   | 188,6   | 21,9    | 166,7   | 75,5    | 19      |
| 1 NPT                        | 220,1   | SW 41   | 197,8   | 25,1    | 172,7   | 90      | 21      |
| 1 1/4 NPT                    | 235,9   | SW 50   | 212,3   | 28,5    | 183,8   | 110     | 24      |
| 1 1/2 NPT                    | 238,9   | SW 55   | 217,0   | 31,0    | 186     | 122     | 25,2    |
| 2 NPT                        | 247,8   | SW 70   | 229,7   | 37,5    | 192,2   | 151     | 28,5    |





**Valve 2/2 way - angle seat/process valve  
N.C. - Flow direction below the seat -  
pneumatically operated**

**211A4T15NC2-A  
÷  
211A9T50NC2-A**

**PRESENTATION:**

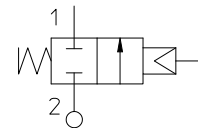
- High flow rate due to the angle seat configuration.
- Anti-water hammer feature with the fluid entry below the seat.
- Electrical operation is easy with the addition of a solenoid pilot.
- Stainless steel body and corrosion resistant actuator.
- The pneumatic actuator can be rotated through 360 degrees.
- Optical position indicator.
- Internal seals are self adjusting for long life.
- Easily convertible from N.C. to N.O. or double acting.
- Universal mounting - any mounting orientation is acceptable.

**USE:** Automation, Heating, Water, Hot water, Steam (180°C), Aggressive and food fluids

**PIPES:** 1/2 NPT - 2 NPT

**VALVE FEATURES:**

Fluid Temperature - 10°C + 180°C  
 Ambient temperature - 40°C + 60°C  
 (according to Atex requirements)  
 Viscosity of the fluid max 600 cSt  
 Material Stainless steel AISI series 316  
 Seal PTFE  
 Packing gland PTFE, FKM



**PILOT ACTUATOR FEATURES:**

Fluid Dry Air or lubricated, gas and neutral fluids  
 Fluid Temperature max + 60°C  
 Body Polyamide 66 with 30% glass fibre  
 Gaskets NBR  
 Actuator Ø 70

| Pipe<br>ANSI/ASME<br>Bl.20.1 | Code          | Ø<br>mm | Kv<br>l/mn | Actuator pilot<br>pressure (bar) |     | Differential<br>pressure (bar) |     | Max. allowable<br>pressure<br>PS (bar) | Weight<br>Kg |
|------------------------------|---------------|---------|------------|----------------------------------|-----|--------------------------------|-----|--|--------------|
|                              |               |         |            | min                              | max | min                            | max |  |              |
| 1/2 NPT                      | 211A4T15NC2-A | 15      | 80         | 4                                | 10  | 0                              | 16  | 40                                     | 1,4          |
| 3/4 NPT                      | 211A5T20NC2-A | 20      | 150        |                                  |     |                                | 10  |  | 1,5          |
| 1 NPT                        | 211A6T25NC2-A | 25      | 190        |                                  |     |                                | 10  |  | 1,8          |
| 1 1/4 NPT                    | 211A7T32NC2-A | 32      | 340        |                                  |     |                                | 7   | 25                                     | 2,4          |
| 1 1/2 NPT                    | 211A8T40NC2-A | 40      | 430        |                                  |     |                                | 4,5 |  | 2,7          |
| 2 NPT                        | 211A9T50NC2-A | 50      | 620        |                                  |     |                                | 3   | 16                                     | 3,9          |



**CE Approval**  
 (Pressure Equipment Directive 97/23/CE)  
 for Valve 211A7 ÷ 211A9



(According to Directive 94/9/CE ATEX )  
 II 2G c IIC TX

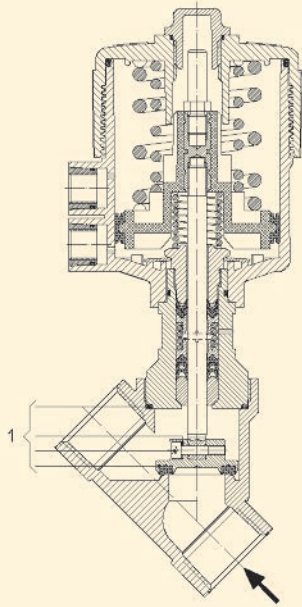
**Note**

Available on request pilot series S.V. 31A2 according to Atex requirements (see catalogue page)  
 Together with male thread nipple male 1/4 NPT - 1/4 NPT  
 Material compatibility with the fluids to be checked.

The "ODE" reserves the right to carry out technical and aesthetic modifications without prior notification.

**MAINTENANCE KIT:**

1.  
 1/2 NPT R500045  
 3/4 NPT R500048  
 1 NPT R500051  
 1 1/4 NPT R500054  
 1 1/2 NPT R500057  
 2 NPT R500075



**DIMENSIONS:**

| Pipe<br>ANSI/ASME<br>Bl.20.1 | A<br>mm | B<br>mm | C<br>mm | D<br>mm | H<br>mm | L<br>mm | T<br>mm |
|------------------------------|---------|---------|---------|---------|---------|---------|---------|
| 1/2 NPT                      | 206,8   | SW 27   | 178,7   | 15,4    | 163,3   | 65      | 17      |
| 3/4 NPT                      | 211,7   | SW 32   | 188,6   | 21,9    | 166,7   | 75,5    | 19      |
| 1 NPT                        | 220,1   | SW 41   | 197,8   | 25,1    | 172,7   | 90      | 21      |
| 1 1/4 NPT                    | 235,9   | SW 50   | 212,3   | 28,5    | 183,8   | 110     | 24      |
| 1 1/2 NPT                    | 238,9   | SW 55   | 217,0   | 31,0    | 186     | 122     | 25,2    |
| 2 NPT                        | 247,8   | SW 70   | 229,7   | 37,5    | 192,2   | 151     | 28,5    |

