



Solenoid valve 2/2 way N.C. With pilot control Explosion proof - Atex Ex d

21X2KIV120
÷
21X4KIV250

PRESENTATION:

S.V. with pilot control for interception of fluids compatible with the construction materials. Aluminium coil housing, explosion proof "Ex d" . Electrical and electromechanical components according to Atex Directive 2014/34/EU.

A minimum operational pressure of 0,1 bar is required. The materials used and the tests carried out ensure maximum reliability and duration.

USE: Potentially explosive atmospheres
Zone 1, 2, 21, 22

PIPES: G 1/2 - G 1

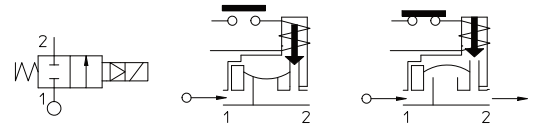
COIL: 8W - Ø 13
BDV 180°C (class H)

Max. allowable pressure (PS) 25 bar
Housing ambient temperature - 40°C + 60°C



Gaskets	Temperature		Medium
	- 10°C	+ 80°C	
V=FKM (fluoroelastomer)	- 10°C	+ 80°C	Demineralized water, chemical products compatible with stainless steel
E=EPDM (ethylene-propylene)	- 10°C	+ 80°C	Water, low pressure steam
F=H-NBR (hydrogenated nitrile)	- 30°C	+ 80°C	Air, inert gas, water R 134a, R 404a

For seals other than FKM replace the letter "V" with the ones corresponding to the other seals. E.I. 21X2KIV120.



Pipe ISO 228/1	Code	Max viscosity		Ø mm	Kv l/mn	Power watt	Pressure		
		cSt	°E				min	M.O.P.D.	
							bar	AC bar	DC bar
G 1/2	21X2KIV120	12	~ 2	12	35	8	0,1	20	20
G 3/4	21X3KIV190			19	130			16	16
G 1	21X4KIV250			25	160				

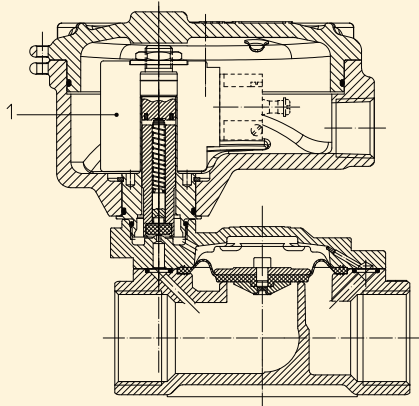
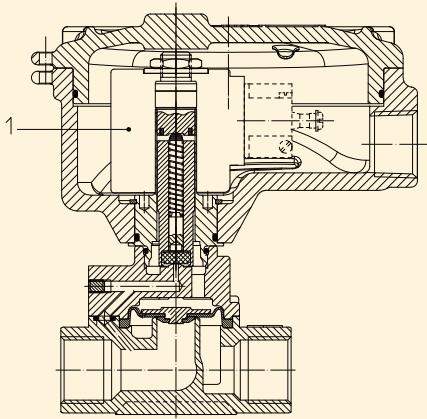


(According to Directive 2014/34/EU ATEX)
II 2G Ex d IIC T6 or T5 Gb
II 2D Ex tb IIIC T80°C or T95°C Db IP67

Note

Available on request and with minimum quantities.

The "ODE" reserves the right to carry out technical and aesthetic modifications without prior notice..



MATERIALS:

Body Stainless steel AISI 316
Armature Tube Stainless steel AISI series 300
Fixed core Stainless steel AISI series 400
Plunger Stainless steel AISI series 400
Phase displacement ring Gold plated copper
Spring Stainless steel AISI series 300
Seal Standard: V=FKM
 On request: E=EPDM F=H-NBR
Orifice Stainless steel AISI 316
Coil housing: Die cast and passivated Aluminium

Connector conformity ISO 4400

FEATURES:

Electrical conformity IEC 335
Protection degree IP 67 EN 60529 (DIN 40050)
 if installed with cable gland Atex Ex d IP67 or higher.

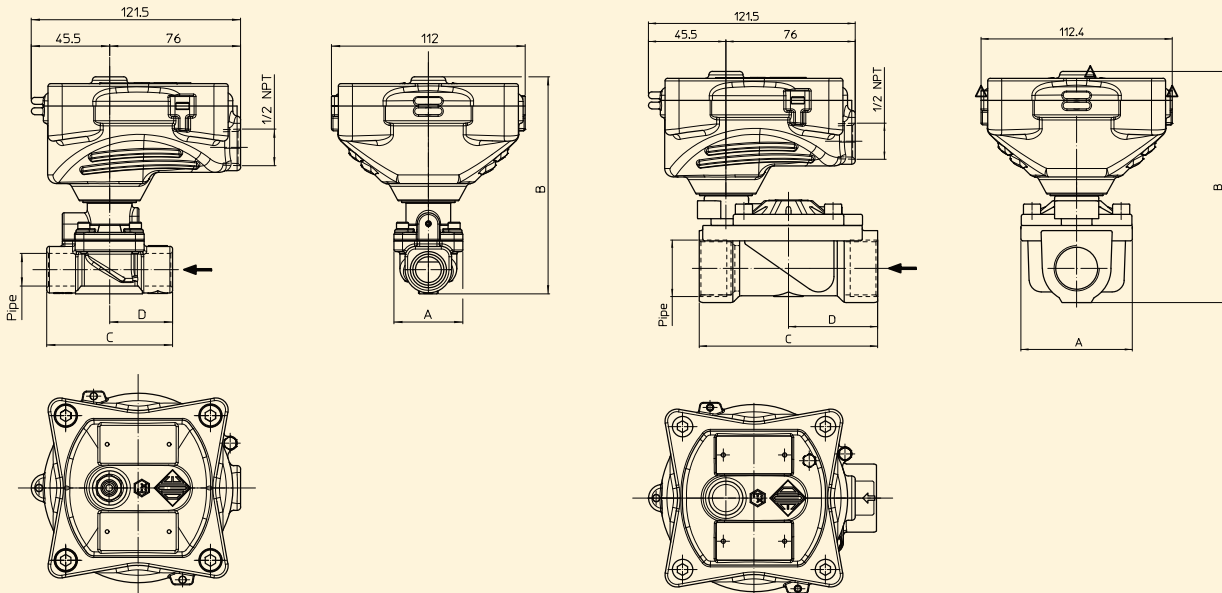
SPARE PARTS:

1. Coil:
 See coils list for Solenoid valves explosion proof Atex - Ex d

ACCESSORIES:

Code P992219 Cable Gland (to be ordered separately)

DIMENSIONS:



Type	Pipe ISO 228/1	A mm	B mm	C mm	D mm
21X2KIV120	G 1/2	40	120	73	36,5
21X3KIV190	G 3/4	65	136	104	88,5
21X4KIV250	G 1				

COIL TYPE	POWER ABSORPTION		
	W	Hold VA ~	Inrush VA ~
B	8	14,5	25



Solenoid valve 2/2 way N.O. Combined operation Explosion proof - Atex Ex d

21X2ZIV120D

÷

21X4ZIV250D

PRESENTATION:

Combined operation S.V. for interception of fluids compatible with the construction materials. Aluminium coil housing, explosion proof "Ex d". Electrical and electromechanical components according to Atex Directive 2014/34/EU.

A minimum operational pressure of 0,1 bar is required. The materials used and the tests carried out ensure maximum reliability and duration.

USE: Potentially explosive atmospheres
Zone 1, 2, 21, 22

PIPES: G 1/2 - G 1

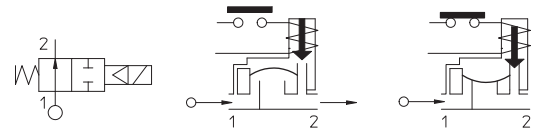
COIL: 8W - Ø 13
BDV 180°C (class H)

Max. allowable pressure (PS) 25 bar
Housing ambient temperature - 40°C + 60°C



Gaskets	Temperature		Medium
	- 10°C	+ 80°C	
V=FKM (fluoroelastomer)	- 10°C	+ 80°C	Demineralized water, chemical products compatible with stainless steel
F=H-NBR (hydrogenated nitrile)	- 30°C	+ 80°C	Air, inert gas, water R 134a, R 404a

For seals other than FKM replace the letter "V" with the ones corresponding to the other seals. E.I. 21X2ZIF120D.



Pipe ISO 228/1	Code	Max viscosity		Ø mm	Kv l/mn	Power watt	Pressure			
		cSt	°E				min bar	M.O.P.D.		
								AC bar	DC bar	
G 1/2	21X2ZIV120D	12	~ 2	12	35	8	0,1	20	20	
G 3/4	21X3ZIV190D			19				130	16	16
G 1	21X4ZIV250D			25				160		

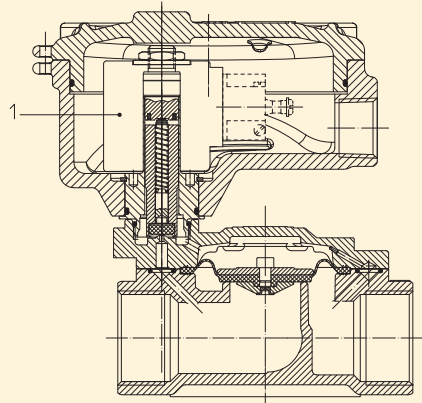
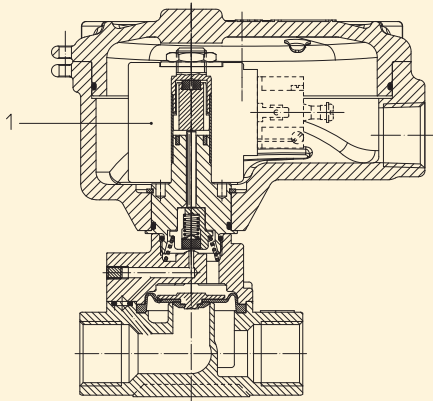


(According to Directive 2014/34/EU ATEX)
II 2G Ex d IIC T6 or T5 Gb
II 2D Ex tb IIIC T80°C or T95°C Db IP67

Note

Available on request and with minimum quantities.

The "ODE" reserves the right to carry out technical and aesthetic modifications without prior notification.



MATERIALS:

Body Stainless steel AISI 316
Armature Tube Stainless steel AISI series 300
Fixed core Stainless steel AISI series 400
Plunger Stainless steel AISI series 400
Phase displacement ring Gold plated copper
Spring Stainless steel AISI series 300
Seal Standard: V=FKM
 On request: F=H-NBR
Coil housing: Die cast and passivated Aluminium

Connector conformity ISO 4400

FEATURES:

Electrical conformity IEC 335
Protection degree IP 67 EN 60529 (DIN 40050)
 if installed with cable gland Atex Ex d IP67 or higher.

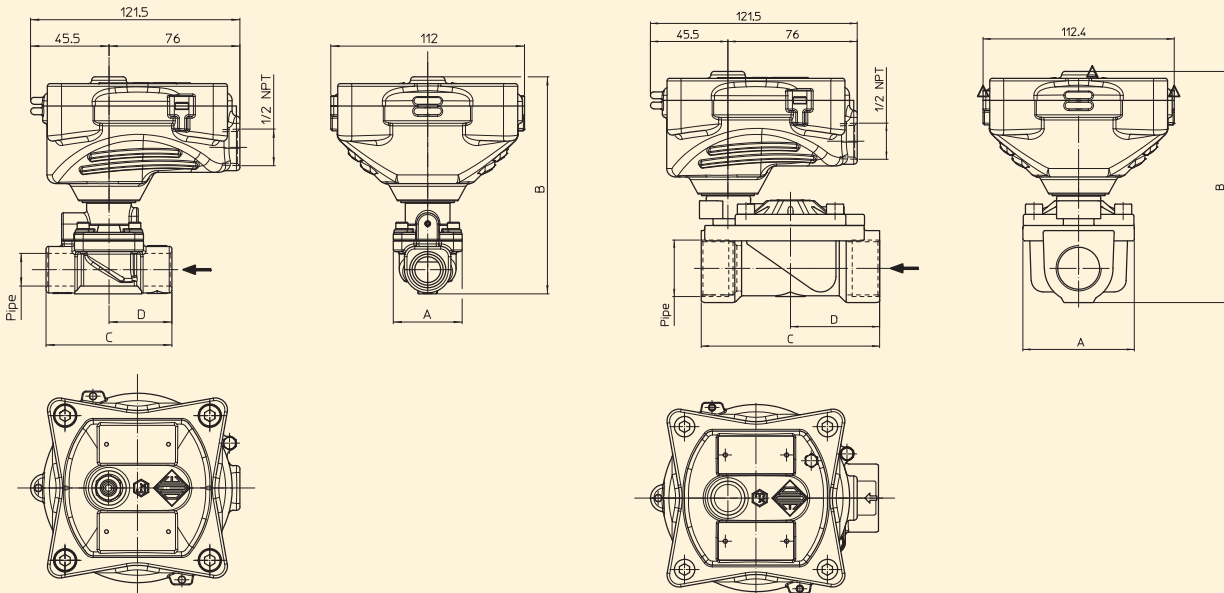
SPARE PARTS:

1. Coil:
 See coils list for Solenoid valves explosion proof Atex - Ex d

ACCESSORIES:

Code P992219 Cable Gland (to be ordered separately)

DIMENSIONS:



Type	Pipe ISO 228/1	A mm	B mm	C mm	D mm
21X2ZIV120D	G 1/2	40	120	73	36,5
21X3ZIV190D	G 3/4	65	136	104	88,5
21X4ZIV250D	G 1				

COIL TYPE	POWER ABSORPTION		
	W	Hold VA ~	Inrush VA ~
B	8	14,5	25